

For Research Use Only

# PPP2R2C Recombinant monoclonal antibody, PBS Only

Catalog Number: 86383-1-PBS



## Basic Information

Catalog Number:

86383-1-PBS

Size:

100ug, Concentration: 1 mg/ml by Nanodrop;

Source:

Rabbit

Isotype:

IgG

Immunogen Catalog Number:

AG3470

GenBank Accession Number:

BC032954

GeneID (NCBI):

5522

UNIPROT ID:

Q9Y2T4

Full Name:

protein phosphatase 2 (formerly 2A), regulatory subunit B, gamma isoform

Calculated MW:

430 aa, 49 kDa

Observed MW:

49-53 kDa

Purification Method:

Protein A purification

CloneNo.:

250997F4

## Applications

Tested Applications:

WB, IHC, Indirect ELISA

Species Specificity:

human, mouse, rat

## Background Information

Protein phosphatase 2 regulatory subunit B gamma, also known as PPP2R2C or B55-gamma, encodes a gamma isoform of the subunit B55 subfamily, which is a regulatory subunit of Protein phosphatase type 2A (PP2A) (PMID: 24126060). PPP2R2C has been identified as a potential tumor suppressor in several cancers, including prostate and brain cancers (PMID: 23493267, PMID: 24126060). The decreased expression of PPP2R2C is associated with tumor progression, metastasis, and poorer patient outcomes in prostate cancer.

## Storage

Storage:

Store at -80°C.

Storage Buffer:

PBS only, pH7.3

For technical support and original validation data for this product please contact:

T: 1 (888) 4PTGLAB (1-888-478-4522) (toll free in USA), or 1(312) 455-8498 (outside USA)

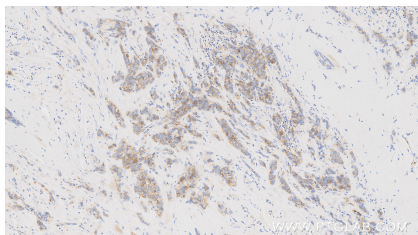
E: [proteintech@ptglab.com](mailto:proteintech@ptglab.com)  
W: [ptglab.com](http://ptglab.com)

This product is exclusively available under Proteintech Group brand and is not available to purchase from any other manufacturer.

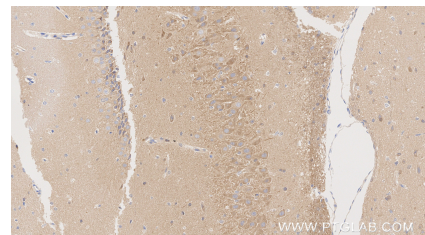
## Selected Validation Data



Various lysates were subjected to SDS PAGE followed by western blot with 86383-1-RR (PPP2R2C antibody) at dilution of 1:10000 incubated at room temperature for 1.5 hours. This data was developed using the same antibody clone with 86383-1-PBS in a different storage buffer formulation.



Immunohistochemical analysis of paraffin-embedded human breast cancer tissue slide using 86383-1-RR (PPP2R2C antibody) at dilution of 1:500 (under 10x lens). Heat mediated antigen retrieval with Tris-EDTA buffer (pH 9.0). This data was developed using the same antibody clone with 86383-1-PBS in a different storage buffer formulation.



Immunohistochemical analysis of paraffin-embedded rat brain tissue slide using 86383-1-RR (PPP2R2C antibody) at dilution of 1:500 (under 20x lens). Heat mediated antigen retrieval with Tris-EDTA buffer (pH 9.0). This data was developed using the same antibody clone with 86383-1-PBS in a different storage buffer formulation.