

For Research Use Only

PPP2R2C Recombinant monoclonal antibody

Catalog Number: 86383-1-RR



Basic Information

Catalog Number: 86383-1-RR	GenBank Accession Number: BC032954	Purification Method: Protein A purification
Size: 100ul , Concentration: 1000 µg/ml by Nanodrop;	GeneID (NCBI): 5522	CloneNo.: 250997F4
Source: Rabbit	UNIPROT ID: Q9Y2T4	Recommended Dilutions: WB: 1:5000-1:50000 IHC: 1:250-1:1000
Isotype: IgG	Full Name: protein phosphatase 2 (formerly 2A), regulatory subunit B, gamma isoform	
Immunogen Catalog Number: AG3470	Calculated MW: 430 aa, 49 kDa	
	Observed MW: 49-53 kDa	

Applications

Tested Applications:

WB, IHC, ELISA

Species Specificity:

human, mouse, rat

Note-IHC: suggested antigen retrieval with TE buffer pH 9.0; (*) Alternatively, antigen retrieval may be performed with citrate buffer pH 6.0

Positive Controls:

WB : A549 cells, HeLa cells, MCF-7 cells, mouse lung tissue, mouse testis tissue, mouse brain tissue, rat brain tissue

IHC : human breast cancer tissue, rat brain tissue

Background Information

Protein phosphatase 2 regulatory subunit B gamma, also known as PPP2R2C or B55-gamma, encodes a gamma isoform of the subunit B55 subfamily, which is a regulatory subunit of Protein phosphatase type 2A (PP2A) (PMID: 24126060). PPP2R2C has been identified as a potential tumor suppressor in several cancers, including prostate and brain cancers (PMID: 23493267, PMID: 24126060). The decreased expression of PPP2R2C is associated with tumor progression, metastasis, and poorer patient outcomes in prostate cancer.

Storage

Storage:

Store at -20°C. Stable for one year after shipment.

Storage Buffer:

PBS with 0.02% sodium azide and 50% glycerol, pH7.3

Aliquoting is unnecessary for -20°C storage

***** 20ul sizes contain 0.1% BSA**

For technical support and original validation data for this product please contact:

T: 1 (888) 4PTGLAB (1-888-478-4522) (toll free in USA), or 1(312) 455-8498 (outside USA)

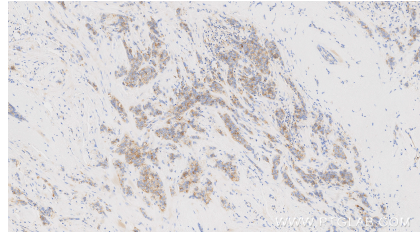
E: proteintech@ptglab.com
W: ptglab.com

This product is exclusively available under Proteintech Group brand and is not available to purchase from any other manufacturer.

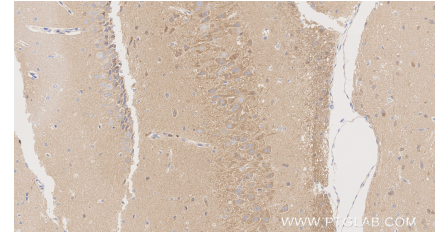
Selected Validation Data



Various lysates were subjected to SDS PAGE followed by western blot with 86383-1-RR (PPP2R2C antibody) at dilution of 1:10000 incubated at room temperature for 1.5 hours.



Immunohistochemical analysis of paraffin-embedded human breast cancer tissue slide using 86383-1-RR (PPP2R2C antibody) at dilution of 1:500 (under 10x lens). Heat mediated antigen retrieval with Tris-EDTA buffer (pH 9.0).



Immunohistochemical analysis of paraffin-embedded rat brain tissue slide using 86383-1-RR (PPP2R2C antibody) at dilution of 1:500 (under 20x lens). Heat mediated antigen retrieval with Tris-EDTA buffer (pH 9.0).