

For Research Use Only

AREG Recombinant monoclonal antibody, PBS Only (Capture)

Catalog Number: 86387-3-PBS



Basic Information

Catalog Number: 86387-3-PBS	GenBank Accession Number: NM_001657.3	Purification Method: Protein A purification
Size: 100ug , Concentration: 1 mg/ml by Nanodrop;	GeneID (NCBI): 374	CloneNo.: 250996B2
Source: Rabbit	UNIPROT ID: P15514	
Isotype: IgG	Full Name: amphiregulin	
Immunogen Catalog Number: EG4569	Calculated MW: 28 kDa	

Applications

Tested Applications:
Sandwich ELISA, Indirect ELISA, Sample test

Species Specificity:
human

Product Information

86387-3-PBS targets AREG as part of a matched antibody pair:

MP02406-2: 86387-3-PBS capture and 86387-1-PBS detection (validated in Sandwich ELISA)

Unconjugated rabbit recombinant monoclonal antibody in PBS only (BSA and azide free) storage buffer at a concentration of 1 mg/mL, ready for conjugation. Created using Proteintech's proprietary in-house recombinant technology. Recombinant production enables unrivalled batch-to-batch consistency, easy scale-up, and future security of supply.

This conjugation ready format makes antibodies ideal for use in many applications including: ELISAs, multiplex assays requiring matched pairs, mass cytometry, and multiplex imaging applications. Antibody use should be optimized by the end user for each application and assay.

Storage

Storage:
Store at -80°C.

Storage Buffer:
PBS only, pH7.3

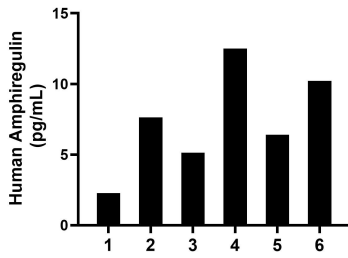
For technical support and original validation data for this product please contact:

T: 1 (888) 4PTGLAB (1-888-478-4522) (toll free in USA), or 1(312) 455-8498 (outside USA)

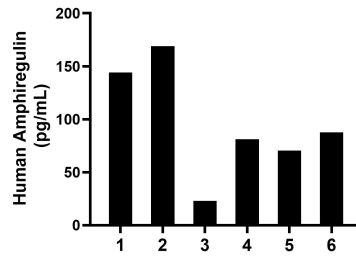
E: proteintech@ptglab.com
W: ptglab.com

This product is exclusively available under Proteintech Group brand and is not available to purchase from any other manufacturer.

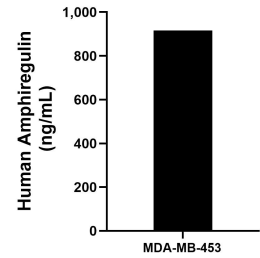
Selected Validation Data



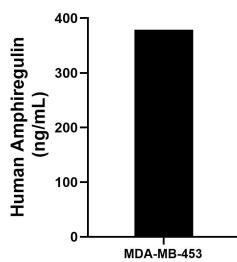
Urine of six individual healthy human donors was measured. The Amphiregulin concentration of detected samples was determined to be 7.4 ng/mL with a range of 2.3-12.5 ng/mL.



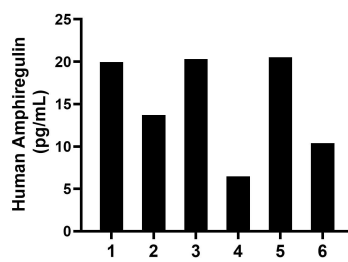
Saliva of six individual healthy human donors was measured. The Amphiregulin concentration of detected samples was determined to be 95.9 ng/mL with a range of 22.9-168.9 ng/mL.



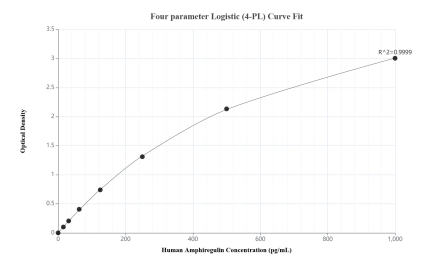
MDA-MB-453 were cultured in DMEM supplemented with 10% fetal bovine serum, 2.5 mM L-glutamine, 100 U/mL penicillin, and 100 µg/mL streptomycin sulfate. An aliquot of the cell culture supernatant was removed, assayed for human Amphiregulin, and measured 915.6 pg/mL.



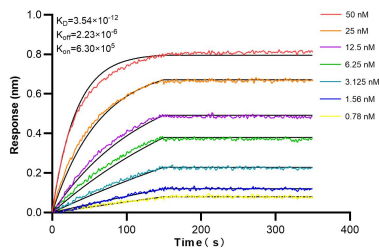
The mean Amphiregulin concentration was determined to be 378.9 ng/mL in MDA-MB-453 cell extract based on a 1.8 mg/mL extract load.



Plasma of eight individual healthy human donors was measured. The Amphiregulin concentration of detected samples was determined to be 15.22 pg/mL with a range of 6.47-20.52 pg/mL.



Sandwich ELISA standard curve of MP02406-2, Human Amphiregulin Recombinant Matched Antibody Pair - PBS only. 86387-3-PBS was coated to a plate as the capture antibody and incubated with serial dilutions of standard Eg4569. 86387-1-PBS was HRP conjugated as the detection antibody. Range: 15.6-1000 pg/mL.



Biolayer interferometry (BLI) kinetic assays of 86387-3-PBS against Human AREG were performed. The affinity constant is 3.54 pM.

Biolayer interferometry (BLI) kinetic assays of 86387-3-RR against Human AREG were performed. The affinity constant is 3.54 pM.