

For Research Use Only

MBD2 Recombinant antibody, PBS Only

Catalog Number: 86393-3-PBS



Basic Information

Catalog Number: 86393-3-PBS	GenBank Accession Number: NM_003927	Purification Method: Protein A purification
Size: 100ug , Concentration: 1 mg/ml by Nanodrop;	GeneID (NCBI): 8932	CloneNo.: 250339G9
Source: Rabbit	UNIPROT ID: Q9UBB5	
Isotype: IgG	Full Name: methyl-CpG binding domain protein 2	
	Calculated MW: 43 kDa	
	Observed MW: 43-50 kDa	

Applications

Tested Applications:
WB, Indirect ELISA

Species Specificity:
human, mouse

Background Information

MBD2, also named as DMTase, binds CpG islands in promoters where the DNA is methylated at position 5 of cytosine within CpG dinucleotides. MBD2 binds hemi-methylated DNA as well. It recruits histone deacetylases and DNA methyltransferases. MBD2 acts as transcriptional repressor and plays a role in gene silencing (PMID:9774669). MBD2 belongs to a highly conserved member of the MBD protein family, is considered a reader of DNA methylation and drives the crosstalk between DNA methylation and histone deacetylation (PMID: 40089655). MBD2 drives breast cancer progression through the modulation of epithelial-to-mesenchymal transition (PMID: 38556549).

Storage

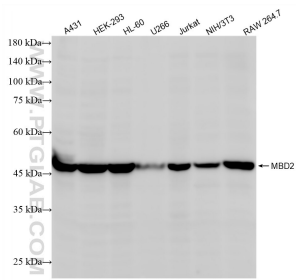
Storage:
Store at -80°C.

Storage Buffer:
PBS only, pH7.3

For technical support and original validation data for this product please contact:
T: 1 (888) 4PTGLAB (1-888-478-4522) (toll free in USA), or 1(312) 455-8498 (outside USA)
E: proteintech@ptglab.com
W: ptglab.com

This product is exclusively available under Proteintech Group brand and is not available to purchase from any other manufacturer.

Selected Validation Data



Various lysates were subjected to SDS PAGE followed by western blot with 86393-3-RR (MBD2 antibody) at dilution of 1:2000 incubated at room temperature for 1.5 hours. This data was developed using the same antibody clone with 86393-3-PBS in a different storage buffer formulation.