

For Research Use Only

MBD2 Recombinant antibody

Catalog Number: 86393-3-RR



Basic Information

Catalog Number: 86393-3-RR	GenBank Accession Number: NM_003927	Purification Method: Protein A purification
Size: 100ul , Concentration: 1000 µg/ml by Nanodrop;	GeneID (NCBI): 8932	CloneNo.: 250339G9
Source: Rabbit	UNIPROT ID: Q9UBB5	Recommended Dilutions: WB: 1:1000-1:4000
Isotype: IgG	Full Name: methyl-CpG binding domain protein 2	
	Calculated MW: 43 kDa	
	Observed MW: 43-50 kDa	

Applications

Tested Applications: WB, ELISA	Positive Controls: WB : A431 cells, HEK-293 cells, HL-60 cells, U266 cells, Jurkat cells, NIH/3T3 cells, RAW 264.7 cells
Species Specificity: human, mouse	

Background Information

MBD2, also named as DMTase, binds CpG islands in promoters where the DNA is methylated at position 5 of cytosine within CpG dinucleotides. MBD2 binds hemi-methylated DNA as well. It recruits histone deacetylases and DNA methyltransferases. MBD2 acts as transcriptional repressor and plays a role in gene silencing (PMID:9774669). MBD2 belongs to a highly conserved member of the MBD protein family, is considered a reader of DNA methylation and drives the crosstalk between DNA methylation and histone deacetylation (PMID: 40089655). MBD2 drives breast cancer progression through the modulation of epithelial-to-mesenchymal transition (PMID: 38556549).

Storage

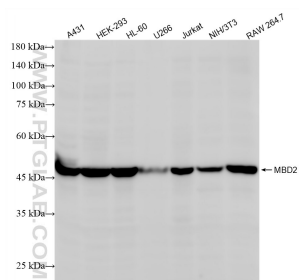
Storage:
Store at -20°C. Stable for one year after shipment.
Storage Buffer:
PBS with 0.02% sodium azide and 50% glycerol, pH7.3
Aliquoting is unnecessary for -20°C storage

*** 20ul sizes contain 0.1% BSA

For technical support and original validation data for this product please contact:
T: 1 (888) 4PTGLAB (1-888-478-4522) (toll free in USA), or 1(312) 455-8498 (outside USA)
E: proteintech@ptglab.com
W: ptglab.com

This product is exclusively available under Proteintech Group brand and is not available to purchase from any other manufacturer.

Selected Validation Data



Various lysates were subjected to SDS PAGE followed by western blot with 86393-3-RR (MBD2 antibody) at dilution of 1:2000 incubated at room temperature for 1.5 hours.