

For Research Use Only

Hemopexin Recombinant monoclonal antibody

Catalog Number: 86395-3-RR



Basic Information

Catalog Number: 86395-3-RR	GenBank Accession Number: NM_000613.2	Purification Method: Protein A purification
Size: 100ul , Concentration: 1000 µg/ml by Nanodrop;	GeneID (NCBI): 3263	CloneNo.: 250345E5
Source: Rabbit	UNIPROT ID: P02790	Recommended Dilutions: WB: 1:5000-1:50000
Isotype: IgG	Full Name: hemopexin	FC (Intra): 0.25 ug per 10 ⁶ cells in a 100 µl suspension
Immunogen Catalog Number: EG3082	Calculated MW: 52 kDa	
	Observed MW: 65-75 kDa	

Applications

Tested Applications: WB, FC (Intra), ELISA	Positive Controls:
Species Specificity: human	WB : human placenta tissue, human plasma
	FC (Intra) : Transfected CHO,

Background Information

Hemopexin (HPX) is the plasma protein responsible for scavenging heme, thus preventing heme-mediated oxidative stress and heme-bound iron loss. In addition, hemopexin blocks heme activation of immune receptors and vascular inflammatory processes. It is mainly expressed in liver, the synthesis of which is induced after inflammation. Alterations of plasma hemopexin level have been linked to disorders like atherosclerosis and inflammatory diseases.

Storage

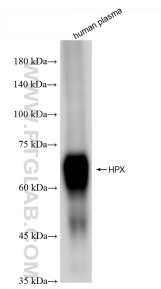
Storage:
Store at -20°C. Stable for one year after shipment.
Storage Buffer:
PBS with 0.02% sodium azide and 50% glycerol, pH7.3
Aliquoting is unnecessary for -20°C storage

*** 20ul sizes contain 0.1% BSA

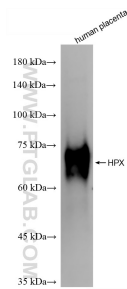
For technical support and original validation data for this product please contact:
T: 1 (888) 4PTGLAB (1-888-478-4522) (toll free in USA), or 1(312) 455-8498 (outside USA)
E: proteintech@ptglab.com
W: ptglab.com

This product is exclusively available under Proteintech Group brand and is not available to purchase from any other manufacturer.

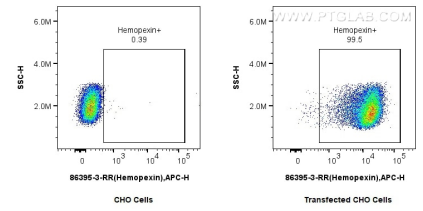
Selected Validation Data



human plasma were subjected to SDS PAGE followed by western blot with 86395-3-RR (HPX antibody) at dilution of 1:10000 incubated at room temperature for 1.5 hours.



human placenta tissue were subjected to SDS PAGE followed by western blot with 86395-3-RR (HPX antibody) at dilution of 1:10000 incubated at room temperature for 1.5 hours.



1×10^6 CHO cells or Transfected CHO cells were intracellularly stained with 0.25 ug Hemopexin Recombinant monoclonal antibody (86395-3-RR, Clone:250345E5) and CoraLite647-conjugated F(ab')₂ Fragment Donkey Anti-Rabbit IgG (H+L) (SA00014-7). Cells were fixed with 4% PFA and permeabilized with Flow Cytometry Perm Buffer.