

For Research Use Only

PGCP Recombinant antibody

Catalog Number: 86405-1-RR



Basic Information

Catalog Number: 86405-1-RR	GenBank Accession Number: BC020689	Purification Method: Protein A purification
Size: 100ul , Concentration: 1000 µg/ml by Nanodrop;	GeneID (NCBI): 10404	CloneNo.: 251059H3
Source: Rabbit	UNIPROT ID: Q9Y646	Recommended Dilutions: WB: 1:2000-1:10000 IF/ICC: 1:200-1:800
Isotype: IgG	Full Name: plasma glutamate carboxypeptidase	
Immunogen Catalog Number: AG9770	Calculated MW: 472 aa, 52 kDa	
	Observed MW: 52 kDa	

Applications

Tested Applications: WB, IF/ICC, ELISA	Positive Controls:
Species Specificity: human, rat	WB : rat kidney tissue, IF/ICC : L02 cells,

Background Information

PGCP(plasma glutamate carboxypeptidase) is also named as LCH1,CPQ and belongs to the peptidase M28 family. It may play an important role in the hydrolysis of circulating peptides. It catalyzes more efficiently the hydrolysis of dipeptides with unsubstituted terminals into amino acids. It is a proteinase that acts on the unsubstituted N- and C-termini of dipeptides. It has been suggested that this PGCP is involved in the release of thyroxine(PMID:20951214). Human PGCP is a metalloproteinase with five potential glycosylation sites, whose activity depends on dimerization and it can be detected a band of 65-72kd in FRTL-5 cells which is pro-PGCP(PMID:22127294). It can be N-glycosylated(PMID:10206990). It has the pro-form of 60-65 kDa and mature form of 55 kDa(PMID:20951214).

Storage

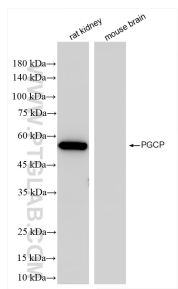
Storage:
Store at -20°C. Stable for one year after shipment.
Storage Buffer:
PBS with 0.02% sodium azide and 50% glycerol, pH7.3
Aliquoting is unnecessary for -20°C storage

*** 20ul sizes contain 0.1% BSA

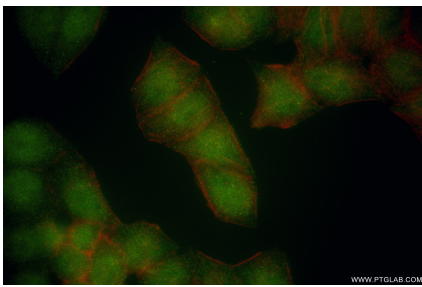
For technical support and original validation data for this product please contact:
T: 1 (888) 4PTGLAB (1-888-478-4522) (toll free in USA), or 1(312) 455-8498 (outside USA)
E: proteintech@ptglab.com
W: ptglab.com

This product is exclusively available under Proteintech Group brand and is not available to purchase from any other manufacturer.

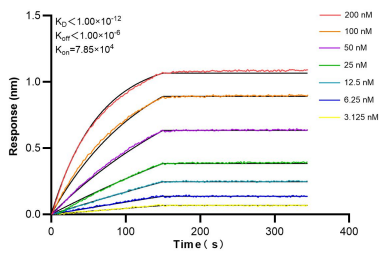
Selected Validation Data



Various lysates were subjected to SDS PAGE followed by western blot with 86405-1-RR (PGCP antibody) at dilution of 1:5000 incubated at room temperature for 1.5 hours. Negative control: mouse brain tissue



Immunofluorescent analysis of (4% PFA) fixed LO2 cells using PGCP antibody (86405-1-RR, Clone: 251059H3) at dilution of 1:400 and CoraLite® 488-Conjugated Goat Anti-Rabbit IgG(H+L) (SA00013-2), CL594-Phalloidin (red).



Biolayer interferometry (BLI) kinetic assays of 86405-1-RR against Human PGCP were performed. The affinity constant is below 1 pM.