

For Research Use Only

PLXNC1 Recombinant monoclonal antibody, PBS Only (Capture)

Catalog Number: 86406-3-PBS



Basic Information

Catalog Number: 86406-3-PBS	GenBank Accession Number: NM_005761.3	Purification Method: Protein A purification
Size: 100ug , Concentration: 1 mg/ml by Nanodrop;	GeneID (NCBI): 10154	CloneNo.: 250374F12
Source: Rabbit	UNIPROT ID: O60486	
Isotype: IgG	Full Name: plexin C1	
Immunogen Catalog Number: EG2721	Calculated MW: 176 kDa	

Applications

Tested Applications:
Sandwich ELISA, Indirect ELISA, Sample test

Species Specificity:
human

Product Information

86406-3-PBS targets PLXNC1 as part of a matched antibody pair:

MP02634-1: 86406-3-PBS capture and 86406-2-PBS detection (validated in Sandwich ELISA)

Unconjugated rabbit recombinant monoclonal antibody in PBS only (BSA and azide free) storage buffer at a concentration of 1 mg/mL, ready for conjugation. Created using Proteintech's proprietary in-house recombinant technology. Recombinant production enables unrivalled batch-to-batch consistency, easy scale-up, and future security of supply.

This conjugation ready format makes antibodies ideal for use in many applications including: ELISAs, multiplex assays requiring matched pairs, mass cytometry, and multiplex imaging applications. Antibody use should be optimized by the end user for each application and assay.

Storage

Storage:
Store at -80°C.
Storage Buffer:
PBS only, pH7.3

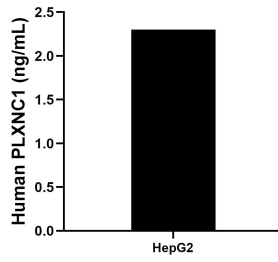
For technical support and original validation data for this product please contact:

T: 1 (888) 4PTGLAB (1-888-478-4522) (toll free in USA), or 1(312) 455-8498 (outside USA)

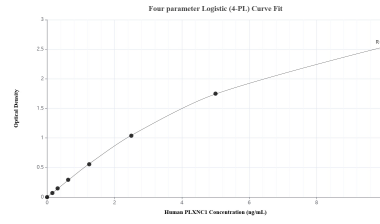
E: proteintech@ptglab.com
W: ptglab.com

This product is exclusively available under Proteintech Group brand and is not available to purchase from any other manufacturer.

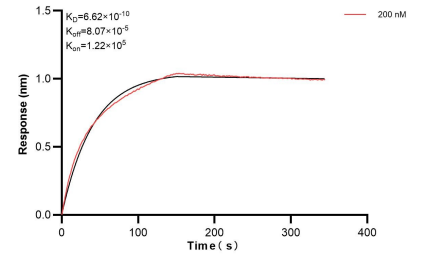
Selected Validation Data



The mean PLXNC1 concentration was determined to be 2.30 ng/mL in HepG2 cell extract based on a 1.20 mg/mL extract load.



Sandwich ELISA standard curve of MP02634-1, Human PLXNC1 Recombinant Matched Antibody Pair - PBS only. 86406-3-PBS was coated to a plate as the capture antibody and incubated with serial dilutions of standard Eg2721. 86406-2-PBS was HRP conjugated as the detection antibody. Range: 0.156-10 ng/mL.



Bi-layer interferometry (BLI) kinetic assay of 86406-3-PBS against Human PLXNC1 was performed. The affinity constant is 0.662 nM.