

For Research Use Only

MSTN Recombinant monoclonal antibody, PBS Only (Detector)

Catalog Number: 86408-2-PBS



Basic Information

Catalog Number: 86408-2-PBS	GenBank Accession Number: BC074757	Purification Method: Protein A purification
Size: 100ug, Concentration: 1 mg/ml by Nanodrop;	GeneID (NCBI): 2660	CloneNo.: 250547D4
Source: Rabbit	UNIPROT ID: O14793	
Isotype: IgG	Full Name: myostatin	
Immunogen Catalog Number: EG1972	Calculated MW: 375 aa, 43 kDa	

Applications

Tested Applications:
Cytometric bead array, Sandwich ELISA, Indirect ELISA

Species Specificity:
human

Product Information

86408-2-PBS targets MSTN as part of a matched antibody pair:

MP02424-1: 86408-1-PBS capture and 86408-2-PBS detection (validated in Cytometric bead array, Sandwich ELISA)

Unconjugated rabbit recombinant monoclonal antibody in PBS only (BSA and azide free) storage buffer at a concentration of 1 mg/mL, ready for conjugation. Created using Proteintech's proprietary in-house recombinant technology. Recombinant production enables unrivalled batch-to-batch consistency, easy scale-up, and future security of supply.

This conjugation ready format makes antibodies ideal for use in many applications including: ELISAs, multiplex assays requiring matched pairs, mass cytometry, and multiplex imaging applications. Antibody use should be optimized by the end user for each application and assay.

Storage

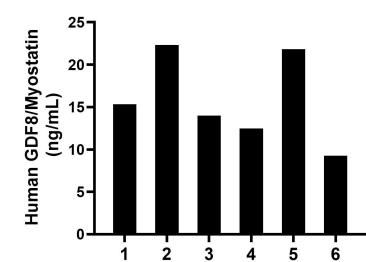
Storage:
Store at -80°C.

Storage Buffer:
PBS only, pH7.3

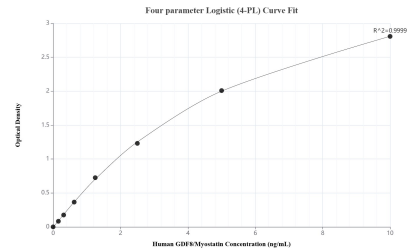
For technical support and original validation data for this product please contact:
T: 1 (888) 4PTGLAB (1-888-478-4522) (toll free in USA), or 1(312) 455-8498 (outside USA)
E: proteintech@ptglab.com
W: ptglab.com

This product is exclusively available under Proteintech Group brand and is not available to purchase from any other manufacturer.

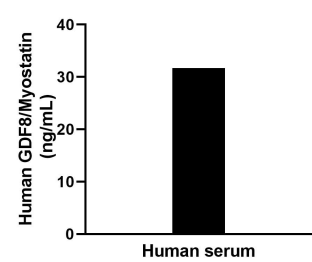
Selected Validation Data



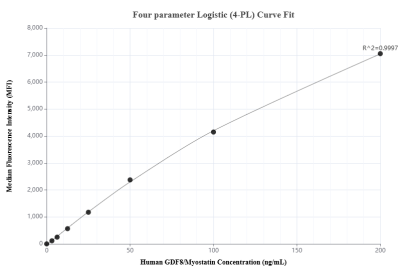
Plasma of six individual healthy human donors was measured. The GDF8/Myostatin concentration of detected samples was determined to be 15.87 ng/mL with a range of 9.27-22.32 ng/mL.



Sandwich ELISA standard curve of MP02424-1, Human GDF8/Myostatin Recombinant Matched Antibody Pair - PBS only. 86408-1-PBS was coated to a plate as the capture antibody and incubated with serial dilutions of standard Eg1972. 86408-2-PBS was HRP conjugated as the detection antibody. Range: 0.156-10 ng/mL.



The mean GDF8/Myostatin concentration was determined to be 32.1 ng/mL in human serum.



Cytometric bead array standard curve of MP02424-1, GDF8/Myostatin Recombinant Matched Antibody Pair, PBS Only. Capture antibody: 86408-1-PBS. Detection antibody: 86408-2-PBS. Standard: Eg1972. Range: 3.125-200 ng/mL.