

For Research Use Only

DLK1 Recombinant monoclonal antibody, PBS Only (Detector)

Catalog Number: 86410-4-PBS



Basic Information

Catalog Number: 86410-4-PBS	GenBank Accession Number: NM_003836.6	Purification Method: Protein A purification
Size: 100ug , Concentration: 1 mg/ml by Nanodrop;	GeneID (NCBI): 8788	CloneNo.: 250840C6
Source: Rabbit	UNIPROT ID: P80370-1	
Isotype: IgG	Full Name: delta-like 1 homolog (Drosophila)	
Immunogen Catalog Number: EG2909	Calculated MW: 41 kDa	

Applications

Tested Applications:
Sandwich ELISA, Indirect ELISA, Sample test

Species Specificity:
human

Product Information

86410-4-PBS targets DLK1 as part of a matched antibody pair:

MP02426-2: 86410-3-PBS capture and 86410-4-PBS detection (validated in Sandwich ELISA)

Unconjugated rabbit recombinant monoclonal antibody in PBS only (BSA and azide free) storage buffer at a concentration of 1 mg/mL, ready for conjugation. Created using Proteintech's proprietary in-house recombinant technology. Recombinant production enables unrivalled batch-to-batch consistency, easy scale-up, and future security of supply.

This conjugation ready format makes antibodies ideal for use in many applications including: ELISAs, multiplex assays requiring matched pairs, mass cytometry, and multiplex imaging applications. Antibody use should be optimized by the end user for each application and assay.

Storage

Storage:
Store at -80°C.

Storage Buffer:
PBS only, pH7.3

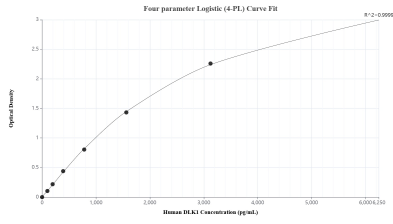
For technical support and original validation data for this product please contact:

T: 1 (888) 4PTGLAB (1-888-478-4522) (toll free in USA), or 1(312) 455-8498 (outside USA)

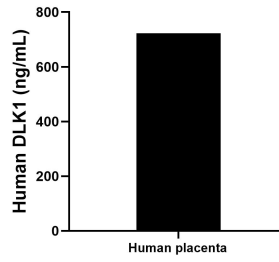
E: proteintech@ptglab.com
W: ptglab.com

This product is exclusively available under Proteintech Group brand and is not available to purchase from any other manufacturer.

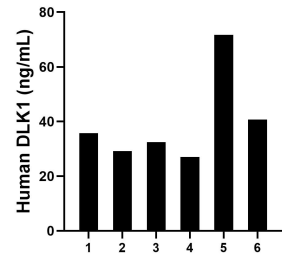
Selected Validation Data



Sandwich ELISA standard curve of MP02426-2, Human DLK1 Recombinant Matched Antibody Pair - PBS only. 86410-3-PBS was coated to a plate as the capture antibody and incubated with serial dilutions of standard Eg2909. 86410-4-PBS was HRP conjugated as the detection antibody. Range: 97.7-6250 pg/mL



The mean DLK1 concentration was determined to be 722.26 ng/mL in human placenta tissue extract based on a 3.80 mg/mL extract load.



Plasma of six individual healthy human donors was measured. The DLK1 concentration of detected samples was determined to be 39.48 ng/mL with a range of 27.08-71.70 ng/mL.