

For Research Use Only

PADI4 Recombinant antibody, PBS Only (Capture)

Catalog Number: 86419-3-PBS



Basic Information

Catalog Number: 86419-3-PBS	GenBank Accession Number: BC025718	Purification Method: Protein A purification
Size: 100ug , Concentration: 1 mg/ml by Nanodrop;	GeneID (NCBI): 23569	CloneNo.: 250881E11
Source: Rabbit	UNIPROT ID: Q9UM07	
Isotype: IgG	Full Name: peptidyl arginine deiminase, type IV	
Immunogen Catalog Number: AG11339	Calculated MW: 663 aa, 74 kDa	

Applications

Tested Applications:
Sandwich ELISA, Indirect ELISA, Sample test

Species Specificity:
human

Product Information

86419-3-PBS targets PADI4 as part of a matched antibody pair:

MP02590-1: 86419-3-PBS capture and 86419-2-PBS detection (validated in Sandwich ELISA)

Unconjugated rabbit recombinant monoclonal antibody in PBS only (BSA and azide free) storage buffer at a concentration of 1 mg/mL, ready for conjugation. Created using Proteintech's proprietary in-house recombinant technology. Recombinant production enables unrivalled batch-to-batch consistency, easy scale-up, and future security of supply.

This conjugation ready format makes antibodies ideal for use in many applications including: ELISAs, multiplex assays requiring matched pairs, mass cytometry, and multiplex imaging applications. Antibody use should be optimized by the end user for each application and assay.

Storage

Storage:
Store at -80°C.
Storage Buffer:
PBS only, pH7.3

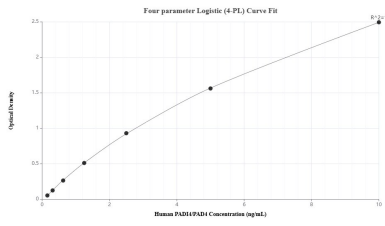
For technical support and original validation data for this product please contact:

T: 1 (888) 4PTGLAB (1-888-478-4522) (toll free
in USA), or 1(312) 455-8498 (outside USA)

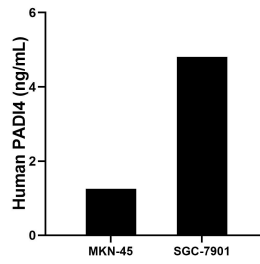
E: proteintech@ptglab.com
W: ptglab.com

This product is exclusively available under Proteintech Group brand and is not available to purchase from any other manufacturer.

Selected Validation Data



Sandwich ELISA standard curve of MP02590-1, Human PADI4/PAD4 Recombinant Matched Antibody Pair - PBS only. 86419-3-PBS was coated to a plate as the capture antibody and incubated with serial dilutions of standard Ag11339. 86419-2-PBS was HRP conjugated as the detection antibody. Range: 0.156-10 ng/mL



The mean PADI4/PAD4 concentration was determined to be 1.25 ng/mL in MKN-45 cell extract based on a 2.7 mg/mL extract load and 4.81 ng/mL in SGC-7901 cell extract based on a 1.3 mg/mL extract load.