

For Research Use Only

# Mouse IL-16 Recombinant monoclonal antibody, PBS Only

Catalog Number: 86421-1-PBS



## Basic Information

<b>Catalog Number:</b> 86421-1-PBS	<b>GenBank Accession Number:</b> NM_010551.3	<b>Purification Method:</b> Protein A purification
<b>Size:</b> 100ug, Concentration: 1 mg/ml by Nanodrop;	<b>GeneID (NCBI):</b> 16170	<b>CloneNo.:</b> 250058G12
<b>Source:</b> Rabbit	<b>UNIPROT ID:</b> O54824-1	
<b>Isotype:</b> IgG	<b>Full Name:</b> interleukin 16	
<b>Immunogen Catalog Number:</b> EG3127	<b>Calculated MW:</b> 141 kDa	
	<b>Observed MW:</b> 66-72 kDa	

## Applications

**Tested Applications:**  
WB, IHC, Indirect ELISA

**Species Specificity:**  
mouse, rat

## Background Information

IL-16 is a pleiotropic cytokine that functions as a chemoattractant, a modulator of T cell activation, and an inhibitor of HIV replication. It is mainly produced by T lymphocytes but also by other immune cells, neuronal cells, fibroblasts and epithelial cells. The signaling process of this cytokine is mediated by CD4. IL-16 induces chemotaxis of CD4+ cells such as lymphocytes, eosinophils, and dendritic cells by ligating CD4 directly at a site distinct from other ligands. Among its multiple functions, IL-16 is a T cell chemoattractant involved in T helper cell inflammatory responses and the regulation of both T cell growth, and responsiveness to regulatory cytokines. The cytokine function is exclusively attributed to the secreted C-terminal peptide, while the N-terminal product may play a role in cell cycle control. Pro-IL-16 can be detected at about 80 kDa, and cleaved fragments can be detected at between 40 and 75 kDa.

## Storage

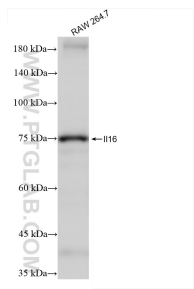
**Storage:**  
Store at -80°C.

**Storage Buffer:**  
PBS only, pH7.3

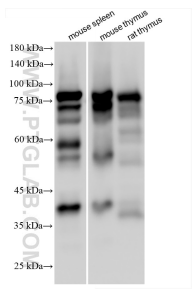
For technical support and original validation data for this product please contact:  
T: 1 (888) 4PTGLAB (1-888-478-4522) (toll free in USA), or 1(312) 455-8498 (outside USA)  
E: [proteintech@ptglab.com](mailto:proteintech@ptglab.com)  
W: [ptglab.com](http://ptglab.com)

This product is exclusively available under Proteintech Group brand and is not available to purchase from any other manufacturer.

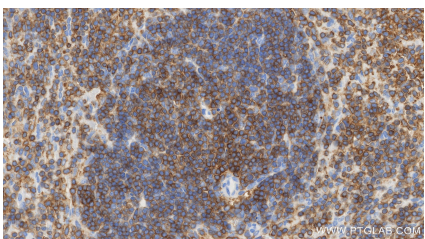
## Selected Validation Data



RAW 264.7 cells were subjected to SDS PAGE followed by western blot with 86421-1-RR (IL16 antibody) at dilution of 1:50000 incubated at room temperature for 1.5 hours. This data was developed using the same antibody clone with 86421-1-PBS in a different storage buffer formulation.



Various lysates were subjected to SDS PAGE followed by western blot with 86421-1-RR (IL16 antibody) at dilution of 1:10000 incubated at room temperature for 1.5 hours. This data was developed using the same antibody clone with 86421-1-PBS in a different storage buffer formulation.



Immunohistochemical analysis of paraffin-embedded mouse spleen tissue slide using 86421-1-RR (IL-16 antibody) at dilution of 1:1000 (under 40x lens). Heat mediated antigen retrieval with Tris-EDTA buffer (pH 9.0). This data was developed using the same antibody clone with 86421-1-PBS in a different storage buffer formulation.