

For Research Use Only

# Mouse SLAMF6 Recombinant antibody, PBS Only

Catalog Number: 86422-1-PBS



## Basic Information

<b>Catalog Number:</b> 86422-1-PBS	<b>GenBank Accession Number:</b> NM_030710.2	<b>Purification Method:</b> Protein A purification
<b>Size:</b> 100ug , Concentration: 1 mg/ml by Nanodrop;	<b>GeneID (NCBI):</b> 30925	<b>CloneNo.:</b> 251099E10
<b>Source:</b> Rabbit	<b>UNIPROT ID:</b> Q9ET39-2	
<b>Isotype:</b> IgG	<b>Full Name:</b> SLAM family member 6	
<b>Immunogen Catalog Number:</b> EG5249	<b>Calculated MW:</b> 36 kDa	
	<b>Observed MW:</b> 60 kDa	

## Applications

**Tested Applications:**  
WB, IF/ICC, Indirect ELISA

**Species Specificity:**  
mouse

## Background Information

Signaling lymphocyte activation molecule 6 (SLAMF6) (Ly108 in mice, NTB-A or SF2000 in humans) is a homophilic receptor belonging to the superfamily immunoglobulin (Ig) domain-containing molecules (PMID:31199820). SLAMF6 is a type I transmembrane protein with two extracellular immunoglobins (Ig)-like domains and three cytoplasmic tyrosine-based signaling motifs, one of which is immunoreceptor tyrosine-based switch motif (PMID:31315913). SLAMF6 is expressed on a wide variety of immune cells including T cells (also TFH), B cells, NK cells (expressed in humans only), double positive thymocytes, eosinophils, and neutrophils (mouse only) (PMID:11862385).

## Storage

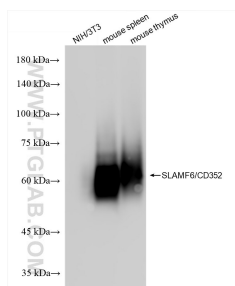
**Storage:**  
Store at -80°C.

**Storage Buffer:**  
PBS only, pH7.3

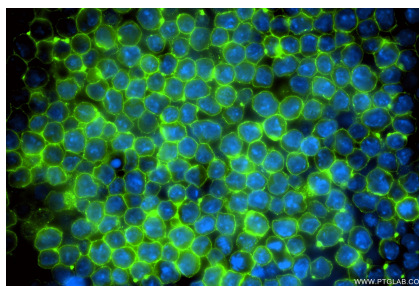
For technical support and original validation data for this product please contact:  
T: 1 (888) 4PTGLAB (1-888-478-4522) (toll free in USA), or 1(312) 455-8498 (outside USA)  
E: [proteintech@ptglab.com](mailto:proteintech@ptglab.com)  
W: [ptglab.com](http://ptglab.com)

This product is exclusively available under Proteintech Group brand and is not available to purchase from any other manufacturer.

## Selected Validation Data



Various lysates were subjected to SDS PAGE followed by western blot with 86422-1-RR (SLAMF6/CD352 antibody) at dilution of 1:5000 incubated at room temperature for 1.5 hours. This data was developed using the same antibody clone with 86422-1-PBS in a different storage buffer formulation.



Immunofluorescent analysis of (4% PFA) fixed A20 cells using SLAMF6 antibody (86422-1-RR, Clone: 251099E10) at dilution of 1:500 and CoraLite®488-Conjugated Goat Anti-Rabbit IgG(H+L) (SA00013-2). This data was developed using the same antibody clone with 86422-1-PBS in a different storage buffer formulation.