

For Research Use Only

Casein Kinase 1 Delta Recombinant antibody

Catalog Number: 86423-2-RR



Basic Information

Catalog Number:

86423-2-RR

Size:

100ul, Concentration: 1000 µg/ml by Nanodrop;

Source:

Rabbit

Isotype:

IgG

Immunogen Catalog Number:

AG5856

GenBank Accession Number:

BC003558

GeneID (NCBI):

1453

UNIPROT ID:

P48730

Full Name:

casein kinase 1, delta

Calculated MW:

47 kDa

Observed MW:

47 kDa

Purification Method:

Protein A purification

CloneNo.:

251238D11

Recommended Dilutions:

WB: 1:500-1:2000

Applications

Tested Applications:

WB, ELISA

Species Specificity:

human, mouse

Positive Controls:

WB : HepG2 cells, HeLa cells, HEK-293 cells, K-562 cell, PANC-1 cells, NIH/3T3 cells

Background Information

CSNK1D(casein kinase I isoform delta) is also named as HCKID, CKId and belongs to the casein kinase I subfamily. CKI is a ubiquitous enzyme which has been found in the cytosol, associated with membranes, and in the nucleus. It can phosphorylate a large number of cytosolic, membrane-associated, and nuclear proteins(PMID:8454611). CSNK1D is found to be associated generally with granulovacuolar bodies and tau-containing neurofibrillary tangles in AD, DS, PSP, PDC, PPND, and controls, and Pick bodies and ballooned neurons in PiD(PMID:10924763). It has 2 isoforms produced by alternative splicing.

Storage

Storage:

Store at -20°C. Stable for one year after shipment.

Storage Buffer:

PBS with 0.02% sodium azide and 50% glycerol, pH7.3

Aliquoting is unnecessary for -20°C storage

*** 20ul sizes contain 0.1% BSA

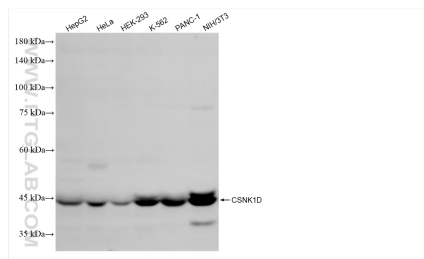
For technical support and original validation data for this product please contact:

T: 1 (888) 4PTGLAB (1-888-478-4522) (toll free in USA), or 1(312) 455-8498 (outside USA)

E: proteintech@ptglab.com
W: ptglab.com

This product is exclusively available under Proteintech Group brand and is not available to purchase from any other manufacturer.

Selected Validation Data



HepG2 cells were subjected to SDS PAGE followed by western blot with 86423-2-RR (CSNK1D antibody) at dilution of 1:1000 incubated at room temperature for 1.5 hours.