

For Research Use Only

SLFN5 Recombinant antibody, PBS Only

Catalog Number: 86424-1-PBS



Basic Information

Catalog Number:

86424-1-PBS

Size:

100ug , Concentration: 1 mg/ml by Nanodrop;

Source:

Rabbit

Isotype:

IgG

Immunogen Catalog Number:

AG9959

GenBank Accession Number:

BC021238

GeneID (NCBI):

162394

UNIPROT ID:

Q08AF3

Full Name:

schlafen family member 5

Calculated MW:

338 aa, 38 kDa

Observed MW:

90-100 kDa

Purification Method:

Protein A purification

CloneNo.:

251214D8

Applications

Tested Applications:

WB, Indirect ELISA

Species Specificity:

human

Background Information

Schlafen family member 5 (SLFN5) is a member of the Schlafen family of proteins, a group of type 1 IFN-inducible proteins. In addition to an AAA (ATPase) domain and a specific SLFN box, the SLFN5 gene contains a helicase domain as well as a nuclear localization sequence, which suggests a role for this protein in transcription-related processes. A growing number of findings suggest that human Schlafen family member 5 (SLFN5) plays a key role in malignancy.

Storage

Storage:

Store at -80°C.

Storage Buffer:

PBS only, pH7.3

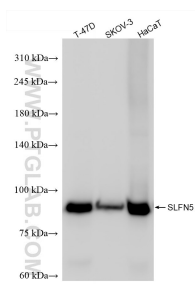
For technical support and original validation data for this product please contact:

T: 1 (888) 4PTGLAB (1-888-478-4522) (toll free in USA), or 1(312) 455-8498 (outside USA)

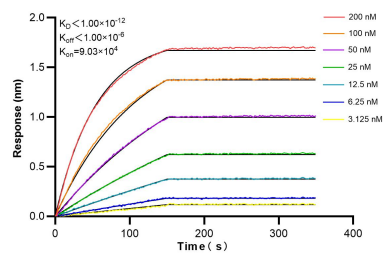
E: proteintech@ptglab.com
W: ptglab.com

This product is exclusively available under Proteintech Group brand and is not available to purchase from any other manufacturer.

Selected Validation Data



Various lysates were subjected to SDS PAGE followed by western blot with 86424-1-RR (SLFN5 antibody) at dilution of 1:10000 incubated at room temperature for 1.5 hours. This data was developed using the same antibody clone with 86424-1-PBS in a different storage buffer formulation.



Biolayer interferometry (BLI) kinetic assays of 86424-1-RR against Human SLFN5 were performed. The affinity constant is below 1 pM.