

For Research Use Only

# SLFN5 Recombinant antibody, PBS Only

Catalog Number: 86424-2-PBS



## Basic Information

### Catalog Number:

86424-2-PBS

### Size:

100ug , Concentration: 1 mg/ml by Nanodrop;

### Source:

Rabbit

### Isotype:

IgG

### Immunogen Catalog Number:

AG9959

### GenBank Accession Number:

BC021238

### GeneID (NCBI):

162394

### UNIPROT ID:

Q08AF3

### Full Name:

schlafen family member 5

### Calculated MW:

338 aa, 38 kDa

### Observed MW:

90-100 kDa

### Purification Method:

Protein A purification

### CloneNo.:

251214B9

## Applications

### Tested Applications:

WB, Indirect ELISA

### Species Specificity:

human

## Background Information

Schlafen family member 5 (SLFN5) is a member of the Schlafen family of proteins, a group of type 1 IFN-inducible proteins. In addition to an AAA (ATPase) domain and a specific SLFN box, the SLFN5 gene contains a helicase domain as well as a nuclear localization sequence, which suggests a role for this protein in transcription-related processes. A growing number of findings suggest that human Schlafen family member 5 (SLFN5) plays a key role in malignancy.

## Storage

### Storage:

Store at -80°C.

### Storage Buffer:

PBS only, pH7.3

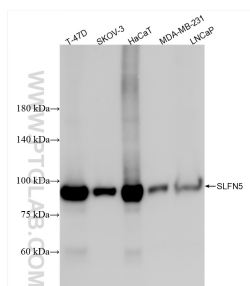
For technical support and original validation data for this product please contact:

T: 1 (888) 4PTGLAB (1-888-478-4522) (toll free in USA), or 1(312) 455-8498 (outside USA)

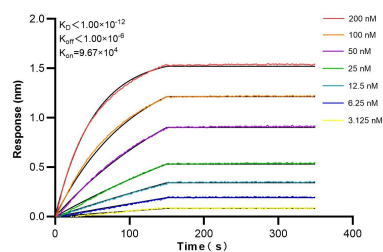
E: [proteintech@ptglab.com](mailto:proteintech@ptglab.com)  
W: [ptglab.com](http://ptglab.com)

This product is exclusively available under Proteintech Group brand and is not available to purchase from any other manufacturer.

## Selected Validation Data



Various lysates were subjected to SDS PAGE followed by western blot with 86424-2-RR (SLFN5 antibody) at dilution of 1:10000 incubated at room temperature for 1.5 hours. This data was developed using the same antibody clone with 86424-2-PBS in a different storage buffer formulation.



Biolayer interferometry (BLI) kinetic assays of 86424-2-RR against Human SLFN5 were performed. The affinity constant is below 1 pM.