

For Research Use Only

SLFN5 Recombinant antibody

Catalog Number: 86424-2-RR



Basic Information

Catalog Number: 86424-2-RR	GenBank Accession Number: BC021238	Purification Method: Protein A purification
Size: 100ul , Concentration: 1000 µg/ml by Nanodrop;	GeneID (NCBI): 162394	CloneNo.: 251214B9
Source: Rabbit	UNIPROT ID: Q08AF3	Recommended Dilutions: WB: 1:5000-1:50000
Isotype: IgG	Full Name: schlafen family member 5	
Immunogen Catalog Number: AG9959	Calculated MW: 338 aa, 38 kDa	
	Observed MW: 90-100 kDa	

Applications

Tested Applications: WB, ELISA	Positive Controls: WB : T-47D cells, SKOV-3 cells, HaCaT cells, MDA-MB-231 cells, LNCaP cells
Species Specificity: human	

Background Information

Schlafen family member 5 (SLFN5) is a member of the Schlafen family of proteins, a group of type 1 IFN-inducible proteins. In addition to an AAA (ATPase) domain and a specific SLFN box, the SLFN5 gene contains a helicase domain as well as a nuclear localization sequence, which suggests a role for this protein in transcription-related processes. A growing number of findings suggest that human Schlafen family member 5(SLFN5) plays a key role in malignancy.

Storage

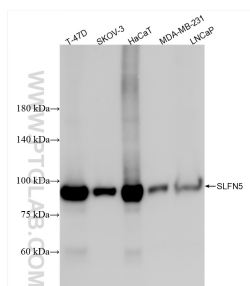
Storage:
Store at -20°C. Stable for one year after shipment.
Storage Buffer:
PBS with 0.02% sodium azide and 50% glycerol, pH7.3
Aliquoting is unnecessary for -20°C storage

*** 20ul sizes contain 0.1% BSA

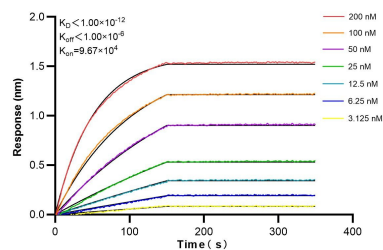
For technical support and original validation data for this product please contact:
T: 1 (888) 4PTGLAB (1-888-478-4522) (toll free in USA), or 1(312) 455-8498 (outside USA)
E: proteintech@ptglab.com
W: ptglab.com

This product is exclusively available under Proteintech Group brand and is not available to purchase from any other manufacturer.

Selected Validation Data



Various lysates were subjected to SDS PAGE followed by western blot with 86424-2-RR (SLFN5 antibody) at dilution of 1:10000 incubated at room temperature for 1.5 hours.



Biolayer interferometry (BLI) kinetic assays of 86424-2-RR against Human SLFN5 were performed. The affinity constant is below 1 pM.