

For Research Use Only

FGL1 Recombinant antibody, PBS Only

Catalog Number: 86426-2-PBS



Basic Information

| | | |
|--|---|---|
| Catalog Number: 86426-2-PBS | GenBank Accession Number: NM_004467.4 | Purification Method: Protein A purification |
| Size: 100ug, Concentration: 1 mg/ml by Nanodrop; | GeneID (NCBI): 2267 | CloneNo.: 251192B12 |
| Source: Rabbit | UNIPROT ID: Q08830 | |
| Isotype: IgG | Full Name: fibrinogen-like 1 | |
| Immunogen Catalog Number: EG2765 | Calculated MW: 36 kDa | |
| | Observed MW: 36 kDa | |

Applications

Tested Applications:
WB, Indirect ELISA
Species Specificity:
human

Background Information

FGL1 is a 68 kDa protein that comprises two disulfide linked 34 kDa homodimers. FGL1 is a predominantly liver expressed protein that has been implicated as both a hepatoprotectant and a hepatocyte mitogen. FGL1 expression is decreased in hepatocellular carcinoma (HCC), and it may play a role in the development of hepatocellular carcinomas.

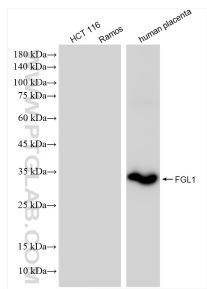
Storage

Storage:
Store at -80°C.
Storage Buffer:
PBS only, pH7.3

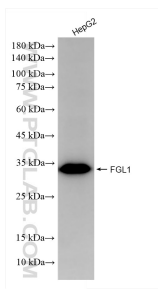
For technical support and original validation data for this product please contact:
T: 1 (888) 4PTGLAB (1-888-478-4522) (toll free in USA), or 1(312) 455-8498 (outside USA)
E: proteintech@ptglab.com
W: ptglab.com

This product is exclusively available under Proteintech Group brand and is not available to purchase from any other manufacturer.

Selected Validation Data



Various lysates were subjected to SDS PAGE followed by western blot with 86426-2-RR (FGL1 antibody) at dilution of 1:10000 incubated at room temperature for 1.5 hours. This data was developed using the same antibody clone with 86426-2-PBS in a different storage buffer formulation.



HepG2 cells were subjected to SDS PAGE followed by western blot with 86426-2-RR (FGL1 antibody) at dilution of 1:10000 incubated at room temperature for 1.5 hours. This data was developed using the same antibody clone with 86426-2-PBS in a different storage buffer formulation.