

For Research Use Only

# FGL1 Recombinant antibody

Catalog Number: 86426-2-RR



## Basic Information

<b>Catalog Number:</b> 86426-2-RR	<b>GenBank Accession Number:</b> NM_004467.4	<b>Purification Method:</b> Protein A purification
<b>Size:</b> 100ul , Concentration: 1000 µg/ml by Nanodrop;	<b>GeneID (NCBI):</b> 2267	<b>CloneNo.:</b> 251192B12
<b>Source:</b> Rabbit	<b>UNIPROT ID:</b> Q08830	<b>Recommended Dilutions:</b> WB: 1:5000-1:50000
<b>Isotype:</b> IgG	<b>Full Name:</b> fibrinogen-like 1	
<b>Immunogen Catalog Number:</b> EG2765	<b>Calculated MW:</b> 36 kDa	
	<b>Observed MW:</b> 36 kDa	

## Applications

<b>Tested Applications:</b> WB, ELISA	<b>Positive Controls:</b> WB : human placenta tissue, HepG2 cells, HCT 116 cells, Ramos cells
<b>Species Specificity:</b> human	

## Background Information

FGL1 is a 68 kDa protein that comprises two disulfide linked 34 kDa homodimers. FGL1 is a predominantly liver expressed protein that has been implicated as both a hepatoprotectant and a hepatocyte mitogen. FGL1 expression is decreased in hepatocellular carcinoma (HCC), and it may play a role in the development of hepatocellular carcinomas.

## Storage

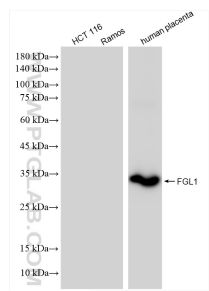
**Storage:**  
Store at -20°C. Stable for one year after shipment.  
**Storage Buffer:**  
PBS with 0.02% sodium azide and 50% glycerol, pH7.3  
Aliquoting is unnecessary for -20°C storage

\*\*\* 20ul sizes contain 0.1% BSA

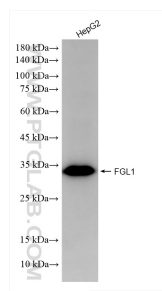
For technical support and original validation data for this product please contact:  
T: 1 (888) 4PTGLAB (1-888-478-4522) (toll free in USA), or 1(312) 455-8498 (outside USA)  
E: [proteintech@ptglab.com](mailto:proteintech@ptglab.com)  
W: [ptglab.com](http://ptglab.com)

This product is exclusively available under Proteintech Group brand and is not available to purchase from any other manufacturer.

## Selected Validation Data



Various lysates were subjected to SDS PAGE followed by western blot with 86426-2-RR (FGL1 antibody) at dilution of 1:10000 incubated at room temperature for 1.5 hours.



HepG2 cells were subjected to SDS PAGE followed by western blot with 86426-2-RR (FGL1 antibody) at dilution of 1:10000 incubated at room temperature for 1.5 hours.