

For Research Use Only

# ALDH2 Recombinant antibody

Catalog Number: 86429-5-RR



## Basic Information

<b>Catalog Number:</b> 86429-5-RR	<b>GenBank Accession Number:</b> BC002967	<b>Purification Method:</b> Protein A purification
<b>Size:</b> 100ul , Concentration: 1000 µg/ml by Nanodrop;	<b>GeneID (NCBI):</b> 217	<b>CloneNo.:</b> 251287E9
<b>Source:</b> Rabbit	<b>UNIPROT ID:</b> P05091	<b>Recommended Dilutions:</b> WB: 1:5000-1:50000 IF/ICC: 1:400-1:1600
<b>Isotype:</b> IgG	<b>Full Name:</b> aldehyde dehydrogenase 2 family (mitochondrial)	
<b>Immunogen Catalog Number:</b> AG7452	<b>Calculated MW:</b> 56 kDa	
	<b>Observed MW:</b> 50-55 kDa	

## Applications

<b>Tested Applications:</b> WB, IF/ICC, ELISA	<b>Positive Controls:</b>
<b>Species Specificity:</b> human, mouse, rat	<b>WB :</b> A549 cells, SK-BR-3 cells, HepG2 cells, mouse liver tissue, rat liver tissue <b>IF/ICC :</b> C2C12 cells, A549 cells

## Background Information

Acetaldehyde dehydrogenase is the next enzyme after alcohol dehydrogenase in the major pathway of alcohol metabolism. It mediates NADP<sup>+</sup>-dependent oxidation of aldehydes into acids during detoxification of alcohol-derived acetaldehyde; lipid peroxidation; and metabolism of corticosteroids, biogenic amines and neurotransmitters. Genetic variation in ALDH2 is responsible for individual differences in responses to drinking alcohol. Thus, the absence of this enzyme is linked to alcohol intolerance and a reduced risk for alcoholism-related liver disease.

## Storage

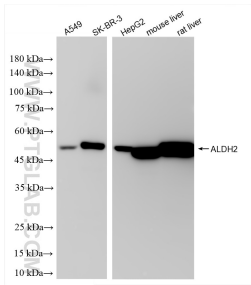
**Storage:**  
Store at -20°C. Stable for one year after shipment.  
**Storage Buffer:**  
PBS with 0.02% sodium azide and 50% glycerol, pH7.3  
**Aliquoting is unnecessary for -20°C storage**

\*\*\* 20ul sizes contain 0.1% BSA

For technical support and original validation data for this product please contact:  
T: 1 (888) 4PTGLAB (1-888-478-4522) (toll free in USA), or 1(312) 455-8498 (outside USA)  
E: [proteintech@ptglab.com](mailto:proteintech@ptglab.com)  
W: [ptglab.com](http://ptglab.com)

This product is exclusively available under Proteintech Group brand and is not available to purchase from any other manufacturer.

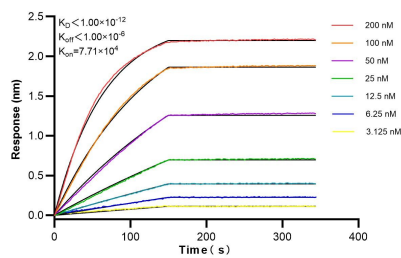
Selected Validation Data



Immunofluorescent analysis of (4% PFA) fixed C2C 12 cells using ALDH2 antibody (86429-5-RR, Clone: 251287E9 ) at dilution of 1:800 and CoraLite®488-Conjugated Goat Anti-Rabbit IgG(H+L) (SA00013-2), CL594-Phalloidin (red).

Immunofluorescent analysis of (4% PFA) fixed A549 cells using ALDH2 antibody (86429-5-RR, Clone: 251287E9 ) at dilution of 1:800 and CoraLite®488-Conjugated Goat Anti-Rabbit IgG(H+L) (SA00013-2), CL594-Phalloidin (red).

Various lysates were subjected to SDS PAGE followed by western blot with 86429-5-RR (ALDH2 antibody) at dilution of 1:10000 incubated at room temperature for 1.5 hours.



Biolayer interferometry (BLI) kinetic assays of 86429-5-RR against Human ALDH2 were performed. The affinity constant is below 1 pM.