

For Research Use Only

# CEBPE Recombinant monoclonal antibody, PBS Only

Catalog Number: 86432-1-PBS



## Basic Information

<b>Catalog Number:</b> 86432-1-PBS	<b>GenBank Accession Number:</b> BC035797	<b>Purification Method:</b> Protein A purification
<b>Size:</b> 100ug, Concentration: 1 mg/ml by Nanodrop;	<b>GeneID (NCBI):</b> 1053	<b>CloneNo.:</b> 251303B10
<b>Source:</b> Rabbit	<b>UNIPROT ID:</b> Q15744	
<b>Isotype:</b> IgG	<b>Full Name:</b> CCAAT/enhancer binding protein (C/EBP), epsilon	
<b>Immunogen Catalog Number:</b> AG5589	<b>Calculated MW:</b> 31 kDa	
	<b>Observed MW:</b> 31-38 kDa	

## Applications

**Tested Applications:**  
WB, IF/ICC, Indirect ELISA

**Species Specificity:**  
human

## Background Information

CEBPE (CCAAT/enhancer binding protein epsilon), also known as C/EBP-epsilon and CRP1, is a transcription factor involved in late myeloid lineage differentiation and cellular function (PMID: 31201888). CEBPE is expressed in a stage-specific manner during myeloid differentiation and regulates transition from the promyelocyte to the myelocyte (PMID: 29773596). Depletion of CEBPE in Acute lymphoblastic leukaemia (ALL) cells reduces cell growth, correspondingly CEBPE binds to the promoters of electron transport and energy generation genes (PMID: 29977016).

## Storage

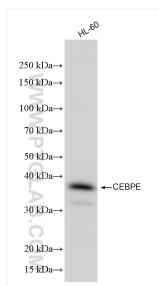
**Storage:**  
Store at -80°C.

**Storage Buffer:**  
PBS only, pH7.3

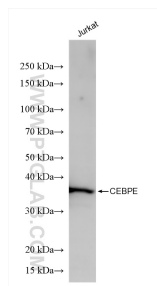
For technical support and original validation data for this product please contact:  
T: 1 (888) 4PTGLAB (1-888-478-4522) (toll free in USA), or 1(312) 455-8498 (outside USA)  
E: [proteintech@ptglab.com](mailto:proteintech@ptglab.com)  
W: [ptglab.com](http://ptglab.com)

This product is exclusively available under Proteintech Group brand and is not available to purchase from any other manufacturer.

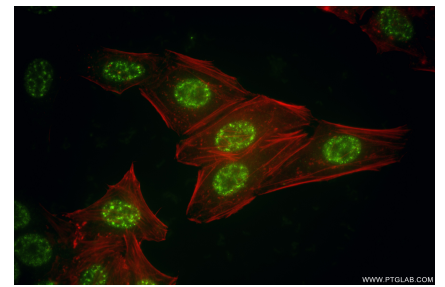
## Selected Validation Data



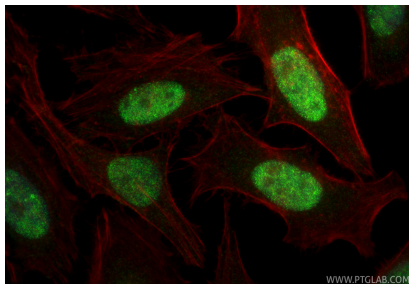
HL-60 cells were subjected to SDS PAGE followed by western blot with 86432-1-RR (CEBPE antibody) at dilution of 1:1000 incubated at room temperature for 1.5 hours. This data was developed using the same antibody clone with 86432-1-PBS in a different storage buffer formulation.



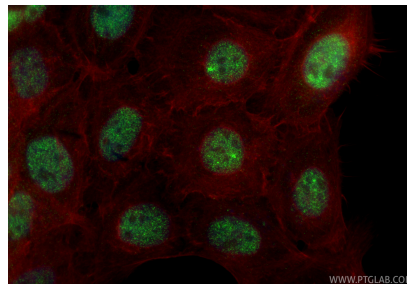
Jurkat cells were subjected to SDS PAGE followed by western blot with 86432-1-RR (CEBPE antibody) at dilution of 1:1000 incubated at room temperature for 1.5 hours. This data was developed using the same antibody clone with 86432-1-PBS in a different storage buffer formulation.



Immunofluorescent analysis of (4% PFA) fixed HepG2 cells using CEBPE antibody (86432-1-RR, Clone: 251303B10) at dilution of 1:500 and CoraLite®488-Conjugated Goat Anti-Rabbit IgG(H+L) (SA00013-2), CL594-Phalloidin (red). This data was developed using the same antibody clone with 86432-1-PBS in a different storage buffer formulation.



Immunofluorescent analysis of (4% PFA) fixed HeLa cells using CEBPE antibody (86432-1-RR, Clone: 251303B10) at dilution of 1:200 and CoraLite®488-Conjugated Goat Anti-Rabbit IgG(H+L) (SA00013-2), CL594-Phalloidin (red). This data was developed using the same antibody clone with 86432-1-PBS in a different storage buffer formulation.



Immunofluorescent analysis of (4% PFA) fixed A431 cells using CEBPE antibody (86432-1-RR, Clone: 251303B10) at dilution of 1:200 and CoraLite®488-Conjugated Goat Anti-Rabbit IgG(H+L) (SA00013-2), CL594-Phalloidin (red). This data was developed using the same antibody clone with 86432-1-PBS in a different storage buffer formulation.