

For Research Use Only

CEBPE Recombinant monoclonal antibody

Catalog Number: 86432-1-RR



Basic Information

Catalog Number: 86432-1-RR	GenBank Accession Number: BC035797	Purification Method: Protein A purification
Size: 100ul , Concentration: 1000 µg/ml by Nanodrop;	GeneID (NCBI): 1053	CloneNo.: 251303B10
Source: Rabbit	UNIPROT ID: Q15744	Recommended Dilutions: WB: 1:500-1:2000 IF/ICC: 1:250-1:1000
Isotype: IgG	Full Name: CCAAT/enhancer binding protein (C/EBP), epsilon	
Immunogen Catalog Number: AG5589	Calculated MW: 31 kDa	
	Observed MW: 31-38 kDa	

Applications

Tested Applications: WB, IF/ICC, ELISA	Positive Controls:
Species Specificity: human	WB : Jurkat cells, HL-60 cells IF/ICC : HepG2 cells, A431 cells, HeLa cells

Background Information

CEBPE (CCAAT/enhancer binding protein epsilon), also known as C/EBP-epsilon and CRP1, is a transcription factor involved in late myeloid lineage differentiation and cellular function (PMID: 31201888). CEBPE is expressed in a stage-specific manner during myeloid differentiation and regulates transition from the promyelocyte to the myelocyte (PMID: 29773596). Depletion of CEBPE in Acute lymphoblastic leukaemia (ALL) cells reduces cell growth, correspondingly CEBPE binds to the promoters of electron transport and energy generation genes (PMID: 29977016).

Storage

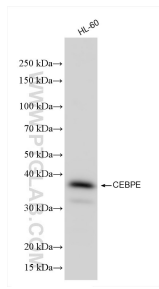
Storage:
Store at -20°C. Stable for one year after shipment.
Storage Buffer:
PBS with 0.02% sodium azide and 50% glycerol, pH7.3
Aliquoting is unnecessary for -20°C storage

*** 20ul sizes contain 0.1% BSA

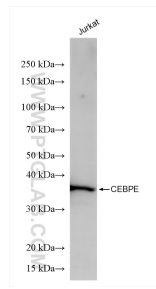
For technical support and original validation data for this product please contact:
T: 1 (888) 4PTGLAB (1-888-478-4522) (toll free in USA), or 1(312) 455-8498 (outside USA)
E: proteintech@ptglab.com
W: ptglab.com

This product is exclusively available under Proteintech Group brand and is not available to purchase from any other manufacturer.

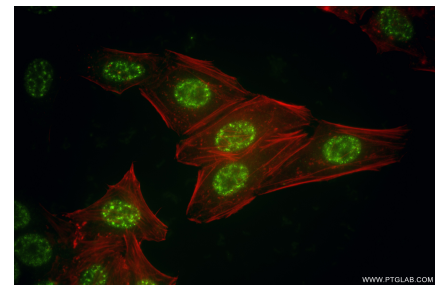
Selected Validation Data



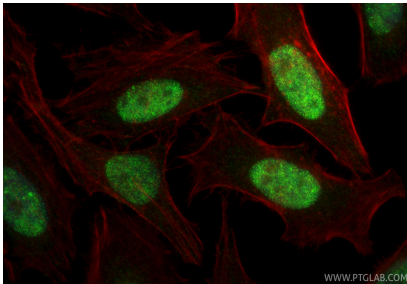
HL-60 cells were subjected to SDS PAGE followed by western blot with 86432-1-RR (CEBPE antibody) at dilution of 1:1000 incubated at room temperature for 1.5 hours.



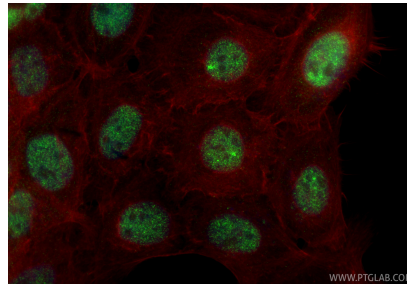
Jurkat cells were subjected to SDS PAGE followed by western blot with 86432-1-RR (CEBPE antibody) at dilution of 1:1000 incubated at room temperature for 1.5 hours.



Immunofluorescent analysis of (4% PFA) fixed HepG2 cells using CEBPE antibody (86432-1-RR, Clone: 251303B10) at dilution of 1:500 and CoraLite®488-Conjugated Goat Anti-Rabbit IgG(H+L) (SA00013-2), CL594-Phalloidin (red).



Immunofluorescent analysis of (4% PFA) fixed HeLa cells using CEBPE antibody (86432-1-RR, Clone: 251303B10) at dilution of 1:200 and CoraLite®488-Conjugated Goat Anti-Rabbit IgG(H+L) (SA00013-2), CL594-Phalloidin (red).



Immunofluorescent analysis of (4% PFA) fixed A431 cells using CEBPE antibody (86432-1-RR, Clone: 251303B10) at dilution of 1:200 and CoraLite®488-Conjugated Goat Anti-Rabbit IgG(H+L) (SA00013-2), CL594-Phalloidin (red).