

For Research Use Only

Claudin 4 Recombinant monoclonal antibody

Catalog Number: 86433-8-RR



Basic Information

Catalog Number: 86433-8-RR	GenBank Accession Number: BC000671	Purification Method: Protein A purification
Size: 100ul , Concentration: 1000 µg/ml by Nanodrop;	GeneID (NCBI): 1364	CloneNo.: 251202E6
Source: Rabbit	UNIPROT ID: O14493	Recommended Dilutions: WB: 1:1000-1:4000 IHC: 1:500-1:2000
Isotype: IgG	Full Name: claudin 4	
	Calculated MW: 22 kDa	
	Observed MW: 18-20 kDa	

Applications

Tested Applications:
WB, IHC, ELISA

Species Specificity:
human

Note-IHC: suggested antigen retrieval with TE buffer pH 9.0; (*) Alternatively, antigen retrieval may be performed with citrate buffer pH 6.0

Positive Controls:

WB : MCF-7 cells, MDA-MB-231 cells, human placenta tissue

IHC : human colon tissue,

Background Information

Claudins are a family of proteins that are the most important components of tight junctions, where they establish the paracellular barrier that controls the flow of molecules in the intercellular space between the cells of an epithelium. They are small (20-27 kDa) proteins with similar structures. They have four transmembrane domains, with the N- and C-termini in the cytoplasm. This antibody is specifically against Claudin 4. Claudin 4 is overexpressed in a variety of cancers. It can be used as a predictor of recurrent malignant pleural effusion in patients with advanced non-small cell lung cancer (PMID: 38629624).

Storage

Storage:

Store at -20°C. Stable for one year after shipment.

Storage Buffer:

PBS with 0.02% sodium azide and 50% glycerol, pH7.3

Aliquoting is unnecessary for -20°C storage

***** 20ul sizes contain 0.1% BSA**

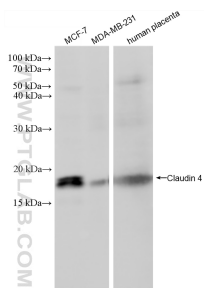
For technical support and original validation data for this product please contact:

T: 1 (888) 4PTGLAB (1-888-478-4522) (toll free in USA), or 1(312) 455-8498 (outside USA)

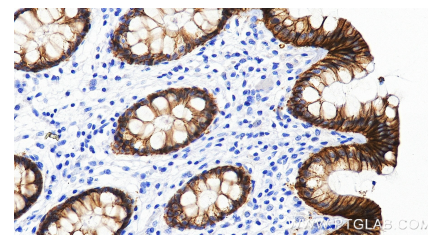
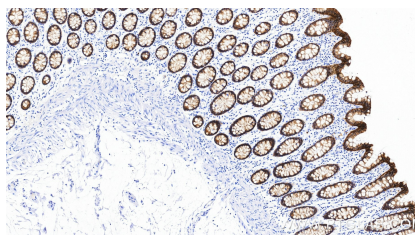
E: proteintech@ptglab.com
W: ptglab.com

This product is exclusively available under Proteintech Group brand and is not available to purchase from any other manufacturer.

Selected Validation Data



Various lysates were subjected to SDS PAGE followed by western blot with 86433-8-RR (Claudin 4 antibody) at dilution of 1:2000 incubated at room temperature for 1.5 hours.



Immunohistochemical analysis of paraffin-embedded human colon tissue slide using 86433-8-RR (Claudin 4 antibody) at dilution of 1:1000 (under 40x lens). Heat mediated antigen retrieval with Tris-EDTA buffer (pH 9.0).