

For Research Use Only

SLC25A13 Recombinant antibody, PBS Only (Detector)

Catalog Number: 86439-2-PBS



Basic Information

Catalog Number: 86439-2-PBS	GenBank Accession Number: BC006566	Purification Method: Protein A purification
Size: 100ug , Concentration: 1 mg/ml by Nanodrop;	GeneID (NCBI): 10165	CloneNo.: 250937F3
Source: Rabbit	UNIPROT ID: Q9UJ50	
Isotype: IgG	Full Name: solute carrier family 25, member 13 (citrin)	
Immunogen Catalog Number: AG1242	Calculated MW: 74 kDa	

Applications

Tested Applications:
Sandwich ELISA, Indirect ELISA, Sample test

Species Specificity:
human

Product Information

86439-2-PBS targets SLC25A13 as part of a matched antibody pair:

MP02610-1: 86439-3-PBS capture and 86439-2-PBS detection (validated in Sandwich ELISA)

Unconjugated rabbit recombinant monoclonal antibody in PBS only (BSA and azide free) storage buffer at a concentration of 1 mg/mL, ready for conjugation. Created using Proteintech's proprietary in-house recombinant technology. Recombinant production enables unrivalled batch-to-batch consistency, easy scale-up, and future security of supply.

This conjugation ready format makes antibodies ideal for use in many applications including: ELISAs, multiplex assays requiring matched pairs, mass cytometry, and multiplex imaging applications. Antibody use should be optimized by the end user for each application and assay.

Storage

Storage:
Store at -80°C.

Storage Buffer:
PBS only, pH7.3

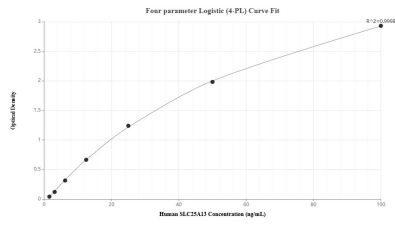
For technical support and original validation data for this product please contact:

T: 1 (888) 4PTGLAB (1-888-478-4522) (toll free in USA), or 1(312) 455-8498 (outside USA)

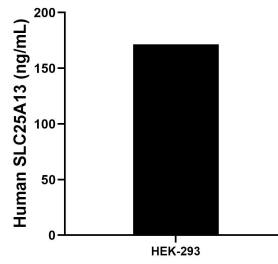
E: proteintech@ptglab.com
W: ptglab.com

This product is exclusively available under Proteintech Group brand and is not available to purchase from any other manufacturer.

Selected Validation Data



Sandwich ELISA standard curve of MP02610-1, Human SLC25A13 Recombinant Matched Antibody Pair - PBS only. 86439-3-PBS was coated to a plate as the capture antibody and incubated with serial dilutions of standard Ag1242. 86439-2-PBS was HRP conjugated as the detection antibody. Range: 1.56-100 ng/mL



The mean SLC25A13 concentration was determined to be 171.52 ng/mL in HEK-293 cell extract based on a 1.2 mg/mL extract load.