

For Research Use Only

SEPHS2 Recombinant antibody, PBS Only

Catalog Number: 86443-1-PBS



Basic Information

Catalog Number: 86443-1-PBS	GenBank Accession Number: BC016643	Purification Method: Protein A purification
Size: 100ug , Concentration: 1 mg/ml by Nanodrop;	GeneID (NCBI): 22928	CloneNo.: 251213A8
Source: Rabbit	UNIPROT ID: Q99611	
Isotype: IgG	Full Name: selenophosphate synthetase 2	
Immunogen Catalog Number: AG5255	Calculated MW: 47 kDa	
	Observed MW: 47-50 kDa	

Applications

Tested Applications:
WB, Indirect ELISA

Species Specificity:
human, mouse, rat

Background Information

SEPHS2 (Selenophosphate synthetase 2), a selenophosphate synthetase, catalyzes the conversion of selenite and adenosine triphosphate (ATP) into selenophosphate. SEPHS2 is the rate-limiting enzyme that converts selenite to selenocysteine, a key substance in the synthesis of many selenium proteins such as glutathione peroxidase, thioredoxin reductase, and formate dehydrogenase (PMID: 40750759, 31695102).

Storage

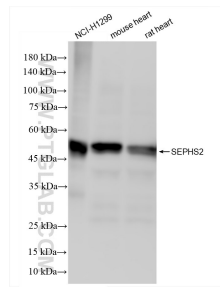
Storage:
Store at -80°C.

Storage Buffer:
PBS only, pH7.3

For technical support and original validation data for this product please contact:
T: 1 (888) 4PTGLAB (1-888-478-4522) (toll free in USA), or 1(312) 455-8498 (outside USA)
E: proteintech@ptglab.com
W: ptglab.com

This product is exclusively available under Proteintech Group brand and is not available to purchase from any other manufacturer.

Selected Validation Data



Various lysates were subjected to SDS PAGE followed by western blot with 86443-1-RR (SEPHS2 antibody) at dilution of 1:3000 incubated at room temperature for 1.5 hours. This data was developed using the same antibody clone with 86443-1-PBS in a different storage buffer formulation.