

For Research Use Only

SEPHS2 Recombinant antibody

Catalog Number: 86443-1-RR



Basic Information

Catalog Number: 86443-1-RR	GenBank Accession Number: BC016643	Purification Method: Protein A purification
Size: 100ul , Concentration: 1000 µg/ml by Nanodrop;	GeneID (NCBI): 22928	CloneNo.: 251213A8
Source: Rabbit	UNIPROT ID: Q99611	Recommended Dilutions: WB: 1:1000-1:6000
Isotype: IgG	Full Name: selenophosphate synthetase 2	
Immunogen Catalog Number: AG5255	Calculated MW: 47 kDa	
	Observed MW: 47-50 kDa	

Applications

Tested Applications: WB, ELISA	Positive Controls:
Species Specificity: human, mouse, rat	WB : NCI-H1299 cells, mouse heart tissue, rat heart tissue

Background Information

SEPHS2 (Selenophosphate synthetase 2), a selenophosphate synthetase, catalyzes the conversion of selenite and adenosine triphosphate (ATP) into selenophosphate. SEPHS2 is the rate-limiting enzyme that converts selenite to selenocysteine, a key substance in the synthesis of many selenium proteins such as glutathione peroxidase, thioredoxin reductase, and formate dehydrogenase (PMID: 40750759, 31695102).

Storage

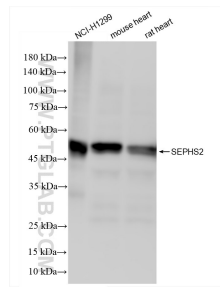
Storage:
Store at -20°C. Stable for one year after shipment.
Storage Buffer:
PBS with 0.02% sodium azide and 50% glycerol, pH7.3
Aliquoting is unnecessary for -20°C storage

*** 20ul sizes contain 0.1% BSA

For technical support and original validation data for this product please contact:
T: 1 (888) 4PTGLAB (1-888-478-4522) (toll free in USA), or 1(312) 455-8498 (outside USA)
E: proteintech@ptglab.com
W: ptglab.com

This product is exclusively available under Proteintech Group brand and is not available to purchase from any other manufacturer.

Selected Validation Data



Various lysates were subjected to SDS PAGE followed by western blot with 86443-1-RR (SEPHS2 antibody) at dilution of 1:3000 incubated at room temperature for 1.5 hours.