

For Research Use Only

Mouse FSTL1 Recombinant monoclonal antibody, PBS Only (Capture)

Catalog Number: 86444-1-PBS



Basic Information

Catalog Number: 86444-1-PBS	GenBank Accession Number: NM_008047.5	Purification Method: Protein A purification
Size: 100ug , Concentration: 1 mg/ml by Nanodrop;	GeneID (NCBI): 14314	CloneNo.: 251240E12
Source: Rabbit	UNIPROT ID: Q62356	
Isotype: IgG	Full Name: follistatin-like 1	
Immunogen Catalog Number: EG2859	Calculated MW: 35 kDa	
	Observed MW: 35-45 kDa	

Applications

Tested Applications:
WB, Cytometric bead array, Sandwich ELISA, Indirect ELISA

Species Specificity:
human, mouse, rat

Product Information

86444-1-PBS targets FSTL1 as part of a matched antibody pair:

MP02461-1: 86444-1-PBS capture and 86444-2-PBS detection (validated in Cytometric bead array)

MP02461-2: 86444-1-PBS capture and 86444-3-PBS detection (validated in Sandwich ELISA)

Unconjugated rabbit recombinant monoclonal antibody in PBS only (BSA and azide free) storage buffer at a concentration of 1 mg/mL, ready for conjugation. Created using Proteintech's proprietary in-house recombinant technology. Recombinant production enables unrivalled batch-to-batch consistency, easy scale-up, and future security of supply.

This conjugation ready format makes antibodies ideal for use in many applications including: ELISAs, multiplex assays requiring matched pairs, mass cytometry, and multiplex imaging applications. Antibody use should be optimized by the end user for each application and assay.

Background Information

Follistatin-like 1 (FSTL1), initially discovered as a TGF- β 1-induced gene, encodes a 308 amino acid secreted 45-55 kDa glycoprotein with a follistatin domain and two non-functional calcium-binding motifs. FSTL1 has been reported to be involved in the fate determination and maturation of epithelial cells. Ablation of the FSTL1 gene in the mouse results in several structural developmental defects and neonatal lethality due to respiratory failure, demonstrating its functional importance. FSTL1 has been reported to exhibit both pro- and anti-inflammatory actions, with a specific anti-apoptotic and protective effect in cardiac or renal cell injury. Zwijsen et al. (1994) detected several isoforms of FSTL1 with molecular masses of 40 to 48 kD, which differ from the 50- to 55-kD products detected by Tanaka et al. (1998) (OMIM). (PMID: 26386648; PMID: 23723173; PMID: 20176958).

Storage

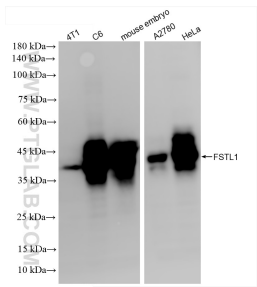
Storage:
Store at -80°C.

Storage Buffer:
PBS only, pH7.3

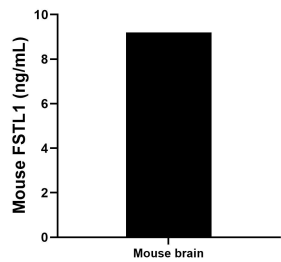
For technical support and original validation data for this product please contact:
T: 1 (888) 4PTGLAB (1-888-478-4522) (toll free in USA), or 1(312) 455-8498 (outside USA)
E: proteintech@ptglab.com
W: ptglab.com

This product is exclusively available under Proteintech Group brand and is not available to purchase from any other manufacturer.

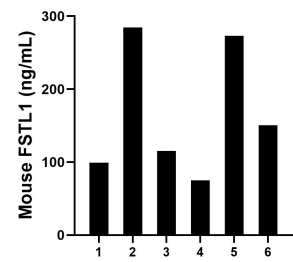
Selected Validation Data



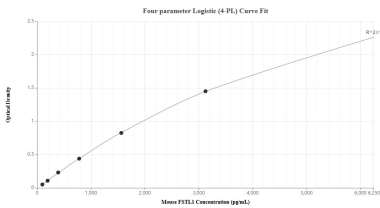
Various lysates were subjected to SDS PAGE followed by western blot with 86444-1-RR (FSTL1 antibody) at dilution of 1:10000 incubated at room temperature for 1.5 hours. This data was developed using the same antibody clone with 86444-1-PBS in a different storage buffer formulation.



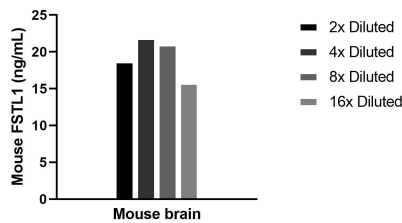
The mean FSTL1 concentration was determined to be 9.20 ng/mL in mouse brain tissue extract based on a 6.6 mg/mL extract load.



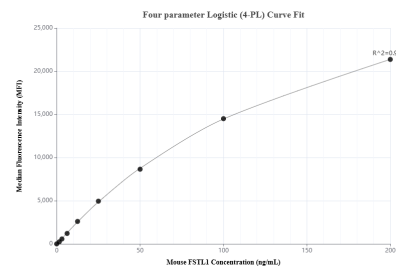
Serum of six mice was measured. The mouse FSTL1 concentration of detected samples was determined to be 64.09 ng/mL with a range of 43.91 - 83.14 ng/mL.



Sandwich ELISA standard curve of MP02461-2, Mouse FSTL1 Recombinant Matched Antibody Pair - PBS only. 86444-1-PBS was coated to a plate as the capture antibody and incubated with serial dilutions of standard Eg2859. 86444-3-PBS was HRP conjugated as the detection antibody. Range: 97.7-6250 pg/mL



The mean FSTL1 concentration was determined to be 19.3 ng/mL in Mouse brain tissue extract based on a 7.0 mg/mL extract load.



Cytometric bead array standard curve of MP02461-1, MOUSE FSTL1 Recombinant Matched Antibody Pair, PBS Only. Capture antibody: 86444-1-PBS. Detection antibody: 86444-2-PBS. Standard: Eg2859. Range: 1.562-200 ng/mL