

For Research Use Only

Mouse Fstl1 Recombinant antibody, PBS Only (Detector)

Catalog Number: 86444-2-PBS



Basic Information

Catalog Number: 86444-2-PBS	GenBank Accession Number: NM_008047.5	Purification Method: Protein A purification
Size: 100ug , Concentration: 1 mg/ml by Nanodrop;	GeneID (NCBI): 14314	CloneNo.: 251240E6
Source: Rabbit	UNIPROT ID: Q62356	
Isotype: IgG	Full Name: follistatin-like 1	
Immunogen Catalog Number: EG2859	Calculated MW: 35 kDa	

Applications

Tested Applications:
Cytometric bead array, Indirect ELISA, Sample test

Species Specificity:
mouse

Product Information

86444-2-PBS targets Fstl1 as part of a matched antibody pair:

MP02461-1: 86444-1-PBS capture and 86444-2-PBS detection (validated in Cytometric bead array)

Unconjugated rabbit recombinant monoclonal antibody in PBS only (BSA and azide free) storage buffer at a concentration of 1 mg/mL, ready for conjugation. Created using Proteintech's proprietary in-house recombinant technology. Recombinant production enables unrivalled batch-to-batch consistency, easy scale-up, and future security of supply.

This conjugation ready format makes antibodies ideal for use in many applications including: ELISAs, multiplex assays requiring matched pairs, mass cytometry, and multiplex imaging applications. Antibody use should be optimized by the end user for each application and assay.

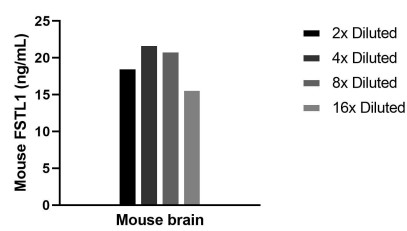
Storage

Storage:
Store at -80°C.
Storage Buffer:
PBS only, pH7.3

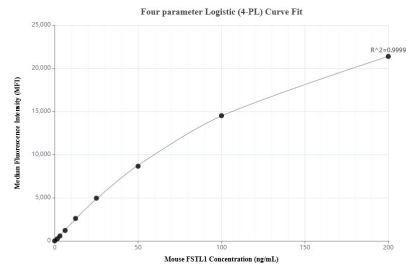
For technical support and original validation data for this product please contact:
T: 1 (888) 4PTGLAB (1-888-478-4522) (toll free in USA), or 1(312) 455-8498 (outside USA)
E: proteintech@ptglab.com
W: ptglab.com

This product is exclusively available under Proteintech Group brand and is not available to purchase from any other manufacturer.

Selected Validation Data



The mean FSTL1 concentration was determined to be 19.3 ng/mL in Mouse brain tissue extract based on a 7.0 mg/mL extract load.



Cytometric bead array standard curve of MP02461-1, MOUSE FSTL1 Recombinant Matched Antibody Pair, PBS Only. Capture antibody: 86444-1-PBS. Detection antibody: 86444-2-PBS. Standard: Eg2859. Range: 1.562-200 ng/mL.