

For Research Use Only



EXO1/Exonuclease 1 Recombinant monoclonal antibody, PBS Only (Capture)

Catalog Number: 86445-1-PBS

Basic Information

Catalog Number:	86445-1-PBS	GenBank Accession Number:	BC007491	Purification Method:	Protein A purification
Size:	100ug , Concentration: 1 mg/ml by Nanodrop;	GeneID (NCBI):	9156	CloneNo.:	251210D3
Source:	Rabbit	UNIPROT ID:	Q9UQ84		
Isotype:	IgG	Full Name:	exonuclease 1		
Immunogen Catalog Number:	AG9253	Calculated MW:	94 kDa		
		Observed MW:	115-120 kDa		

Applications

Tested Applications:
WB, IF/ICC, Sandwich ELISA, Indirect ELISA

Species Specificity:
human

Product Information

86445-1-PBS targets EXO1/Exonuclease 1 as part of a matched antibody pair:

MP02742-1: 86445-1-PBS capture and 86445-2-PBS detection (validated in Sandwich ELISA)

Unconjugated rabbit recombinant monoclonal antibody in PBS only (BSA and azide free) storage buffer at a concentration of 1 mg/mL, ready for conjugation. Created using Proteintech's proprietary in-house recombinant technology. Recombinant production enables unrivalled batch-to-batch consistency, easy scale-up, and future security of supply.

This conjugation ready format makes antibodies ideal for use in many applications including: ELISAs, multiplex assays requiring matched pairs, mass cytometry, and multiplex imaging applications. Antibody use should be optimized by the end user for each application and assay.

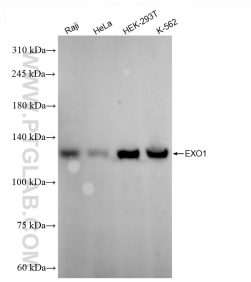
Storage

Storage:
Store at -80°C.
Storage Buffer:
PBS only, pH7.3

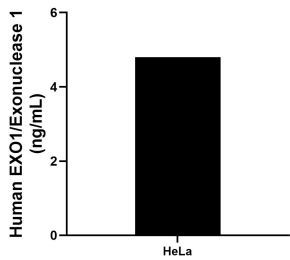
For technical support and original validation data for this product please contact:
T: 1 (888) 4PTGLAB (1-888-478-4522) (toll free in USA), or 1(312) 455-8498 (outside USA)
E: proteintech@ptglab.com
W: ptglab.com

This product is exclusively available under Proteintech Group brand and is not available to purchase from any other manufacturer.

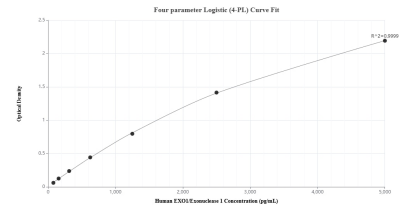
Selected Validation Data



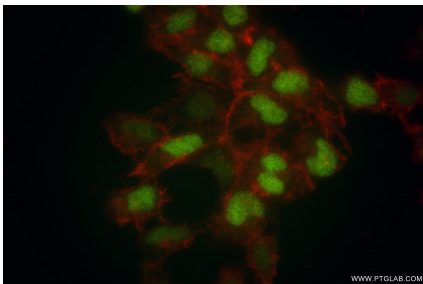
Various lysates were subjected to SDS PAGE followed by western blot with 86445-1-RR (EXO1 antibody) at dilution of 1:2000 incubated at room temperature for 1.5 hours. This data was developed using the same antibody clone with 86445-1-PBS in a different storage buffer formulation.



The mean EXO1/Exonuclease 1 concentration was determined to be 4.80 ng/mL in HeLa cell extract based on a 1.2 mg/mL extract load.



Sandwich ELISA standard curve of MP02742-1, Human EXO1/Exonuclease 1 Recombinant Matched Antibody Pair - PBS only. 86445-1-PBS was coated to a plate as the capture antibody and incubated with serial dilutions of standard Ag9253. 86445-2-PBS was HRP conjugated as the detection antibody. Range: 78.1-5000 pg/mL



Immunofluorescent analysis of (4% PFA) fixed HEK-293 cells using EXO1 antibody (86445-1-RR, Clone: 251210D3) at dilution of 1:500 and CoraLite®488-Conjugated Goat Anti-Rabbit IgG(H+L) (SA00013-2), CL594-Phalloidin (red). This data was developed using the same antibody clone with 86445-1-PBS in a different storage buffer formulation.