

For Research Use Only

# Chromogranin A Recombinant antibody

Catalog Number: 86447-1-RR



## Basic Information

<b>Catalog Number:</b> 86447-1-RR	<b>GenBank Accession Number:</b> NM_007693.2	<b>Purification Method:</b> Protein A purification
<b>Size:</b> 100ul , Concentration: 1000 µg/ml by Nanodrop;	<b>GeneID (NCBI):</b> 12652	<b>CloneNo.:</b> 250318B12
<b>Source:</b> Rabbit	<b>UNIPROT ID:</b> P26339	<b>Recommended Dilutions:</b> WB: 1:2000-1:10000 IHC: 1:1000-1:4000 IF-P: 1:250-1:1000
<b>Isotype:</b> IgG	<b>Full Name:</b> chromogranin A	
<b>Immunogen Catalog Number:</b> EG2760	<b>Calculated MW:</b> 52 kDa	
	<b>Observed MW:</b> 70-85 kDa	

## Applications

<b>Tested Applications:</b> WB, IHC, IF-P, ELISA	<b>Positive Controls:</b>
<b>Species Specificity:</b> mouse, rat	<b>WB :</b> PC-12 cells,
<b>Note-IHC:</b> suggested antigen retrieval with <b>TE buffer pH 9.0; (*) Alternatively, antigen retrieval may be performed with citrate buffer pH 6.0</b>	<b>IHC :</b> mouse pancreas tissue,
	<b>IF-P :</b> mouse pancreas tissue,

## Background Information

Chromogranin A is a member of the granin family of neuroendocrine secretory proteins. It is located in secretory vesicles of neurons and endocrine cells. Chromogranin A is the precursor to several functional peptides including vasostatin, pancreastatin, catestatin and parastatin. These peptides negatively modulate the neuroendocrine function of the releasing cell (autocrine) or nearby cells (paracrine). CgA is one of the most used tumor markers in NET's (neuroendocrine tumors) , and elevated CgA concentrations have been demonstrated in serum or plasma of patients with different types of these tumors.

## Storage

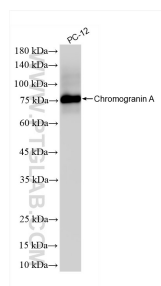
**Storage:**  
Store at -20°C. Stable for one year after shipment.  
**Storage Buffer:**  
PBS with 0.02% sodium azide and 50% glycerol, pH7.3  
**Aliquoting is unnecessary for -20° C storage**

**\*\*\* 20ul sizes contain 0.1% BSA**

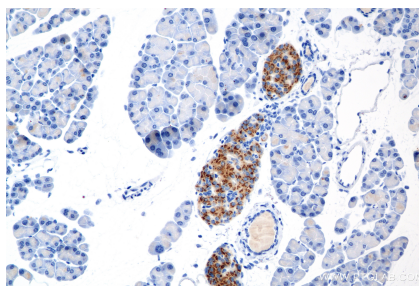
For technical support and original validation data for this product please contact:  
T: 1 (888) 4PTGLAB (1-888-478-4522) (toll free in USA), or 1(312) 455-8498 (outside USA)  
E: [proteintech@ptglab.com](mailto:proteintech@ptglab.com)  
W: [ptglab.com](http://ptglab.com)

This product is exclusively available under Proteintech Group brand and is not available to purchase from any other manufacturer.

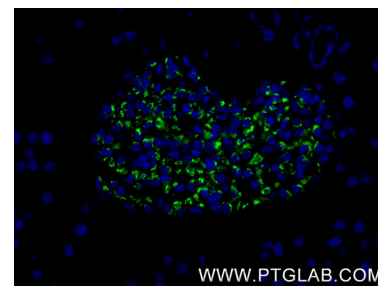
## Selected Validation Data



PC-12 cells were subjected to SDS PAGE followed by western blot with 86447-1-RR (Chga antibody) at dilution of 1:5000 incubated at room temperature for 1.5 hours.



Immunohistochemical analysis of paraffin-embedded mouse pancreas tissue slide using 86447-1-RR (Chromogranin A antibody) at dilution of 1:4000 (under 20x lens). Heat mediated antigen retrieval with Tris-EDTA buffer (pH 9.0).



Immunofluorescent analysis of (4% PFA) fixed paraffin-embedded mouse pancreas tissue using Chromogranin A antibody (86447-1-RR, Clone: 250318B12 ) at dilution of 1:500 and CoraLite®488-Conjugated Goat Anti-Rabbit IgG(H+L) (SA00013-2). Heat mediated antigen retrieval with Tris-EDTA buffer (pH 9.0).