

For Research Use Only

ARD1A Recombinant antibody

Catalog Number: 86450-3-RR



Basic Information

Catalog Number:

86450-3-RR

Size:

100ul , Concentration: 1000 µg/ml by Nanodrop;

Source:

Rabbit

Isotype:

IgG

Immunogen Catalog Number:

AG6519

GenBank Accession Number:

BC000308

GeneID (NCBI):

8260

UNIPROT ID:

P41227

Full Name:

ARD1 homolog A, N-acetyltransferase (S. cerevisiae)

Calculated MW:

26 kDa

Observed MW:

26 kDa

Purification Method:

Protein A purification

CloneNo.:

251237F2

Recommended Dilutions:

WB: 1:5000-1:50000

IF/ICC: 1:50-1:500

Applications

Tested Applications:

WB, IF/ICC, ELISA

Species Specificity:

human, mouse, rat

Positive Controls:

WB : HeLa cells, HEK-293 cells, HL-60 cells, MCF-7 cells, NIH/3T3 cells, C2C12 cells, rat spleen tissue

IF/ICC : HeLa cells,

Storage

Storage:

Store at -20°C. Stable for one year after shipment.

Storage Buffer:

PBS with 0.02% sodium azide and 50% glycerol, pH7.3

Aliquoting is unnecessary for -20°C storage

*** 20ul sizes contain 0.1% BSA

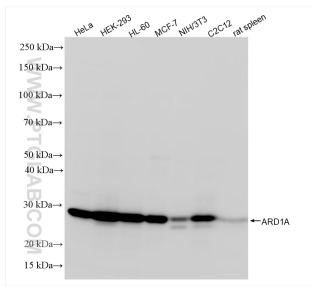
For technical support and original validation data for this product please contact:

T: 1 (888) 4PTGLAB (1-888-478-4522) (toll free in USA), or 1(312) 455-8498 (outside USA)

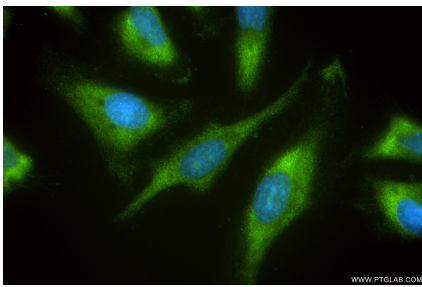
E: proteintech@ptglab.com
W: ptglab.com

This product is exclusively available under Proteintech Group brand and is not available to purchase from any other manufacturer.

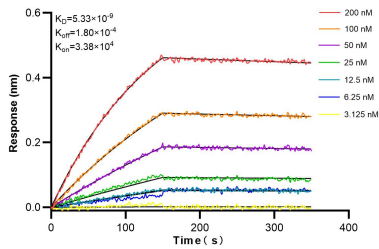
Selected Validation Data



Various lysates were subjected to SDS PAGE followed by western blot with 86450-3-RR (ARD1A antibody) at dilution of 1:10000 incubated at room temperature for 1.5 hours.



Immunofluorescent analysis of (-20°C Ethanol) fixed HeLa cells using ARD1A antibody (86450-3-RR, Clone: 251237F2) at dilution of 1:200 and CoraLite®488-Conjugated Goat Anti-Rabbit IgG(H+L) (SA00013-2).



Biolayer interferometry (BLI) kinetic assays of 86450-3-RR against Human ARD1A were performed. The affinity constant is 5.33 nM.