

For Research Use Only

ARD1A Recombinant monoclonal antibody, PBS Only (Detector)

Catalog Number: 86450-4-PBS



Basic Information

Catalog Number: 86450-4-PBS	GenBank Accession Number: BC000308	Purification Method: Protein A purification
Size: 100ug, Concentration: 1 mg/ml by Nanodrop;	GeneID (NCBI): 8260	CloneNo.: 251237C2
Source: Rabbit	UNIPROT ID: P41227	
Isotype: IgG	Full Name: ARD1 homolog A, N-acetyltransferase (S. cerevisiae)	
Immunogen Catalog Number: AG6519	Calculated MW: 26 kDa	

Applications

Tested Applications:
Sandwich ELISA, Indirect ELISA

Species Specificity:
human

Product Information

86450-4-PBS targets ARD1A as part of a matched antibody pair.

MP02442-2: 86450-5-PBS capture and 86450-4-PBS detection (validated in Sandwich ELISA)

Unconjugated rabbit recombinant monoclonal antibody in PBS only (BSA and azide free) storage buffer at a concentration of 1 mg/mL, ready for conjugation. Created using Proteintech's proprietary in-house recombinant technology. Recombinant production enables unrivalled batch-to-batch consistency, easy scale-up, and future security of supply.

This conjugation ready format makes antibodies ideal for use in many applications including: ELISAs, multiplex assays requiring matched pairs, mass cytometry, and multiplex imaging applications. Antibody use should be optimized by the end user for each application and assay.

Storage

Storage:
Store at -80°C.

Storage Buffer:
PBS only, pH7.3

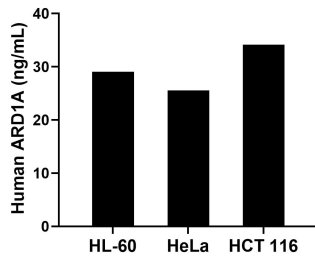
For technical support and original validation data for this product please contact:

T: 1 (888) 4PTGLAB (1-888-478-4522) (toll free in USA), or 1(312) 455-8498 (outside USA)

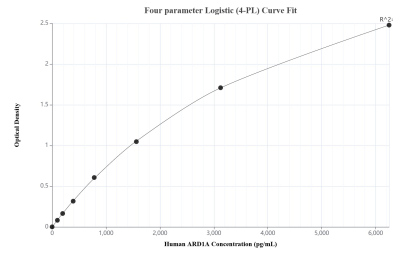
E: proteintech@ptglab.com
W: ptglab.com

This product is exclusively available under Proteintech Group brand and is not available to purchase from any other manufacturer.

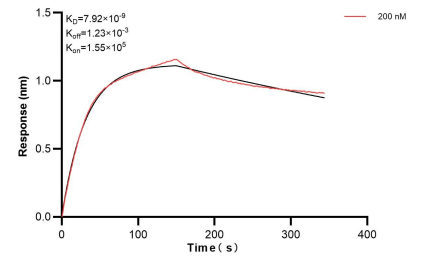
Selected Validation Data



The mean ARD1A concentration was determined to be 29.07 ng/mL in HL-60 cell extract based on a 1.20 mg/mL extract load, 25.52 ng/mL in HeLa cell extract based on a 1.20 mg/mL extract load and 34.15 ng/mL in HCT 116 cell extract based on a 1.30 mg/mL extract load.



Sandwich ELISA standard curve of MP02442-2, Human ARD1A Recombinant Matched Antibody Pair - PBS only. 86450-5-PBS was coated to a plate as the capture antibody and incubated with serial dilutions of standard Ag6519. 86450-4-PBS was HRP conjugated as the detection antibody. Range: 97.7-6250 pg/mL



Bi-layer interferometry (BLI) kinetic assay of 86450-4-PBS against Human ARD1A were performed. The affinity constant is 7.92 nM.