

For Research Use Only

GRWD1 Recombinant antibody

Catalog Number: 86451-3-RR



Basic Information

Catalog Number: 86451-3-RR	GenBank Accession Number: BC002440	Purification Method: Protein A purification
Size: 100ul , Concentration: 1000 µg/ml by Nanodrop;	GeneID (NCBI): 83743	CloneNo.: 251273F6
Source: Rabbit	UNIPROT ID: Q9BQ67	Recommended Dilutions: WB: 1:5000-1:50000 IF/ICC: 1:500-1:2000
Isotype: IgG	Full Name: glutamate-rich WD repeat containing 1	
Immunogen Catalog Number: AG0367	Calculated MW: 49 kDa	
	Observed MW: 49-63 kDa	

Applications

Tested Applications: WB, IF/ICC, ELISA	Positive Controls:
Species Specificity: human, mouse	WB : HeLa cells, HEK-293T cells, PC-3 cells, SKOV-3 cells, RT-4 cells, NIH/3T3 cells IF/ICC : HeLa cells, HepG2 cells

Background Information

WD-repeat proteins are a class of functionally divergent molecules that cooperate with other proteins to regulate cellular processes. WD-repeat proteins have been implicated in a variety of cellular functions that are mostly regulatory in nature, including cytoskeleton organization, vesicular fusion, pre-mRNA splicing, and cell cycle regulation. WD-repeat-containing protein designated glutamate-rich WD repeat (GRWD1) is a component of the 50S and 80S preribosomal complexes and plays a role in ribosome biogenesis and during myeloid differentiation its levels are regulated. (PMID:15885502)

Storage

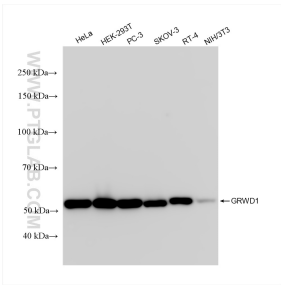
Storage:
Store at -20°C. Stable for one year after shipment.
Storage Buffer:
PBS with 0.02% sodium azide and 50% glycerol, pH7.3
Aliquoting is unnecessary for -20°C storage

*** 20ul sizes contain 0.1% BSA

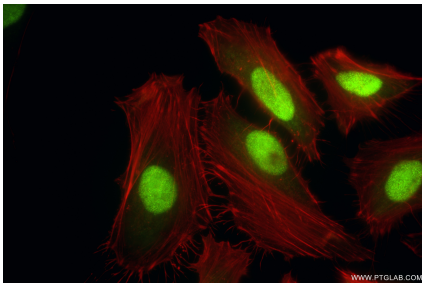
For technical support and original validation data for this product please contact:
T: 1 (888) 4PTGLAB (1-888-478-4522) (toll free in USA), or 1(312) 455-8498 (outside USA)
E: proteintech@ptglab.com
W: ptglab.com

This product is exclusively available under Proteintech Group brand and is not available to purchase from any other manufacturer.

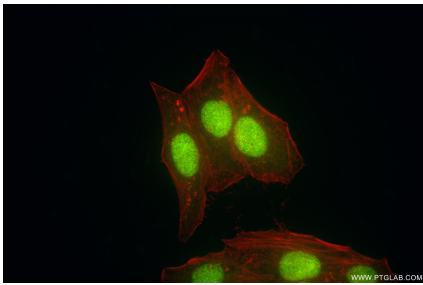
Selected Validation Data



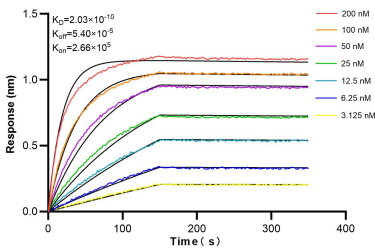
Various lysates were subjected to SDS PAGE followed by western blot with 86451-3-RR (GRWD1 antibody) at dilution of 1:10000 incubated at room temperature for 1.5 hours.



Immunofluorescent analysis of (4% PFA) fixed HeLa cells using GRWD1 antibody (86451-3-RR, Clone: 251273F6) at dilution of 1:1000 and CoraLite® 488-Conjugated Goat Anti-Rabbit IgG(H+L) (SA00013-2), CL594-Phalloidin (red).



Immunofluorescent analysis of (4% PFA) fixed HepG2 cells using GRWD1 antibody (86451-3-RR, Clone: 251273F6) at dilution of 1:1000 and CoraLite® 488-Conjugated Goat Anti-Rabbit IgG(H+L) (SA00013-2), CL594-Phalloidin (red).



Biolayer interferometry (BLI) kinetic assays of 86451-3-RR against Human GRWD1 were performed. The affinity constant is 0.203 nM.