

For Research Use Only

CTP synthase Recombinant antibody, PBS Only

Catalog Number: 86455-1-PBS



Basic Information

Catalog Number:

86455-1-PBS

Size:

100ug, Concentration: 1 mg/ml by
Nanodrop;

Source:

Rabbit

Isotype:

IgG

Immunogen Catalog Number:

AG8707

GenBank Accession Number:

BC009408

GeneID (NCBI):

1503

UNIPROT ID:

P17812

Full Name:

CTP synthase

Calculated MW:

591 aa, 67 kDa

Observed MW:

67 kDa

Purification Method:

Protein A purification

CloneNo.:

251260F2

Applications

Tested Applications:

WB, Indirect ELISA

Species Specificity:

human, mouse

Background Information

CTP synthase (CTPS) is a ubiquitous, cytosolic glutamine amidotransferase that catalyzes the ATP-dependent conversion of uridine-5'-triphosphate (UTP) to cytidine-5'-triphosphate (CTP) - the final, rate-limiting step in the de novo pyrimidine biosynthetic pathway.

Storage

Storage:

Store at -80°C.

Storage Buffer:

PBS only, pH7.3

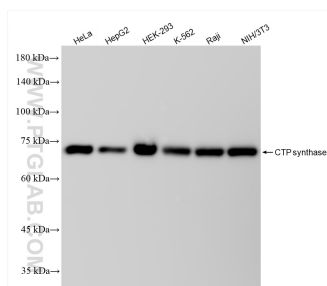
For technical support and original validation data for this product please contact:

T: 1 (888) 4PTGLAB (1-888-478-4522) (toll free
in USA), or 1(312) 455-8498 (outside USA)

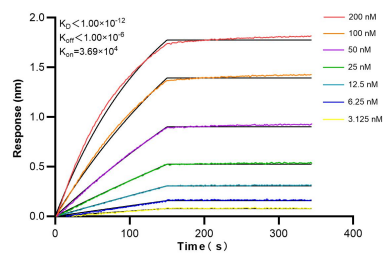
E: proteintech@ptglab.com
W: ptglab.com

This product is exclusively available under Proteintech Group brand and is not available to purchase from any other manufacturer.

Selected Validation Data



Various lysates were subjected to SDS PAGE followed by western blot with 86455-1-RR (CTPS antibody) at dilution of 1:10000 incubated at room temperature for 1.5 hours. This data was developed using the same antibody clone with 86455-1-PBS in a different storage buffer formulation.



Biolayer interferometry (BLI) kinetic assays of 86455-1-RR against Human CTP synthase were performed. The affinity constant is below 1 pM.