

For Research Use Only

CTP synthase Recombinant antibody

Catalog Number: 86455-1-RR



Basic Information

Catalog Number: 86455-1-RR	GenBank Accession Number: BC009408	Purification Method: Protein A purification
Size: 100ul , Concentration: 1000 µg/ml by Nanodrop;	GeneID (NCBI): 1503	CloneNo.: 251260F2
Source: Rabbit	UNIPROT ID: P17812	Recommended Dilutions: WB: 1:5000-1:50000
Isotype: IgG	Full Name: CTP synthase	
Immunogen Catalog Number: AG8707	Calculated MW: 591 aa, 67 kDa	
	Observed MW: 67 kDa	

Applications

Tested Applications: WB, ELISA	Positive Controls: WB : HeLa cells, HepG2 cells, HEK-293 cells, K-562 cells, Raji cells, NIH/3T3 cells
Species Specificity: human, mouse	

Background Information

CTP synthase (CTPS) is a ubiquitous, cytosolic glutamine amidotransferase that catalyzes the ATP-dependent conversion of uridine-5'-triphosphate (UTP) to cytidine-5'-triphosphate (CTP) - the final, rate-limiting step in the de novo pyrimidine biosynthetic pathway.

Storage

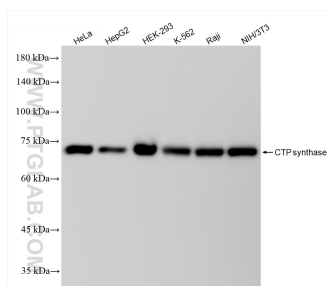
Storage:
Store at -20°C. Stable for one year after shipment.
Storage Buffer:
PBS with 0.02% sodium azide and 50% glycerol, pH7.3
Aliquoting is unnecessary for -20°C storage

*** 20ul sizes contain 0.1% BSA

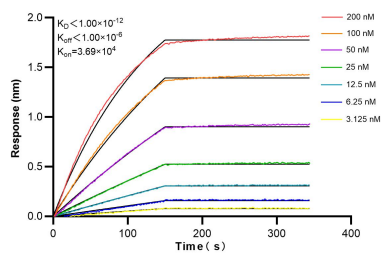
For technical support and original validation data for this product please contact:
T: 1 (888) 4PTGLAB (1-888-478-4522) (toll free in USA), or 1(312) 455-8498 (outside USA)
E: proteintech@ptglab.com
W: ptglab.com

This product is exclusively available under Proteintech Group brand and is not available to purchase from any other manufacturer.

Selected Validation Data



Various lysates were subjected to SDS PAGE followed by western blot with 86455-1-RR (CTPS antibody) at dilution of 1:10000 incubated at room temperature for 1.5 hours.



Biolayer interferometry (BLI) kinetic assays of 86455-1-RR against Human CTP synthase were performed. The affinity constant is below 1 pM.