

For Research Use Only

Cytokeratin 8 Recombinant monoclonal antibody, PBS Only (Capture)

Catalog Number: 86457-4-PBS



Basic Information

Catalog Number: 86457-4-PBS	GenBank Accession Number: BC000654	Purification Method: Protein A purification
Size: 100ug , Concentration: 1 mg/ml by Nanodrop;	GeneID (NCBI): 3856	CloneNo.: 251045E11
Source: Rabbit	UNIPROT ID: P05787	
Isotype: IgG	Full Name: keratin 8	
	Calculated MW: 54 kDa	
	Observed MW: 52 kDa	

Applications

Tested Applications:
WB, IHC, IF/ICC, IF-P, Sandwich ELISA, Indirect ELISA

Species Specificity:
human

Product Information

86457-4-PBS targets Cytokeratin 8 as part of a matched antibody pair:

MP02886-1: 86457-4-PBS capture and 86457-8-PBS detection (validated in Sandwich ELISA)

Unconjugated rabbit recombinant monoclonal antibody in PBS only (BSA and azide free) storage buffer at a concentration of 1 mg/mL, ready for conjugation. Created using Proteintech's proprietary in-house recombinant technology. Recombinant production enables unrivalled batch-to-batch consistency, easy scale-up, and future security of supply.

This conjugation ready format makes antibodies ideal for use in many applications including: ELISAs, multiplex assays requiring matched pairs, mass cytometry, and multiplex imaging applications. Antibody use should be optimized by the end user for each application and assay.

Background Information

Cytokeratin 8 (CK8) is a protein that belongs to the cytokeratin family, which is a group of structural proteins found in the intracytoplasmic cytoskeleton of epithelial cells. CK8 forms intermediate filaments within the cytoplasm of simple epithelial cells, typically as a dimer with cytokeratin 18 (CK18). These filaments provide a stabilizing framework that helps determine cell shape and enables cells to cope with mechanical stress. CK8/CK18 filaments also serve as a mesh of "paths" for signaling molecules, metabolites, and pathogens to travel within the cell in an organized manner. CK8 is expressed in various epithelial tissues and is particularly associated with glandular and simple epithelia. Its expression is also a significant marker in several types of cancer, including lung and esophageal cancer, where it can indicate tumor progression and poor prognosis.

Storage

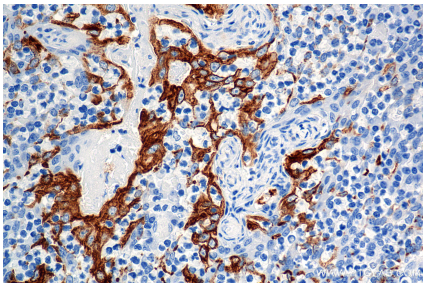
Storage:
Store at -80°C.

Storage Buffer:
PBS only, pH7.3

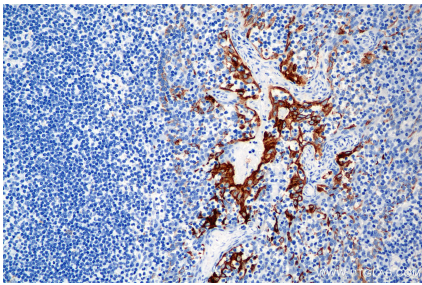
For technical support and original validation data for this product please contact:
T: 1 (888) 4PTGLAB (1-888-478-4522) (toll free in USA), or 1(312) 455-8498 (outside USA)
E: proteintech@ptglab.com
W: ptglab.com

This product is exclusively available under Proteintech Group brand and is not available to purchase from any other manufacturer.

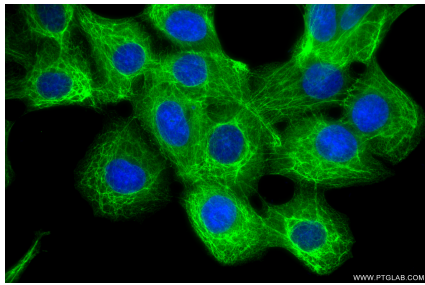
Selected Validation Data



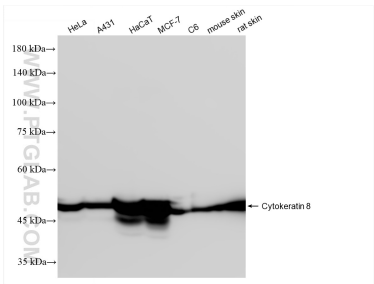
Immunohistochemical analysis of paraffin-embedded human tonsil tissue slide using 86457-4-RR (Cytokeratin 8 antibody) at dilution of 1:2000 (under 40x lens). Heat mediated antigen retrieval with Tris-EDTA buffer (pH 9.0). This data was developed using the same antibody clone with 86457-4-PBS in a different storage buffer formulation.



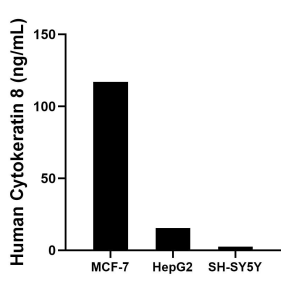
Immunohistochemical analysis of paraffin-embedded human tonsil tissue slide using 86457-4-RR (Cytokeratin 8 antibody) at dilution of 1:2000 (under 20x lens). Heat mediated antigen retrieval with Tris-EDTA buffer (pH 9.0). This data was developed using the same antibody clone with 86457-4-PBS in a different storage buffer formulation.



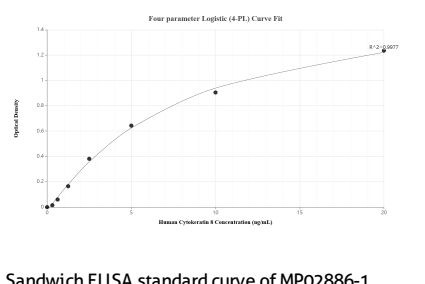
Immunofluorescent analysis of (-20°C Methanol) fixed A431 cells using Cytokeratin 8 antibody (86457-4-RR, Clone: 251045E11) at dilution of 1:2000 and CoraLite®488-Conjugated Goat Anti-Rabbit IgG(H+L) (SA00013-2). This data was developed using the same antibody clone with 86457-4-PBS in a different storage buffer formulation.



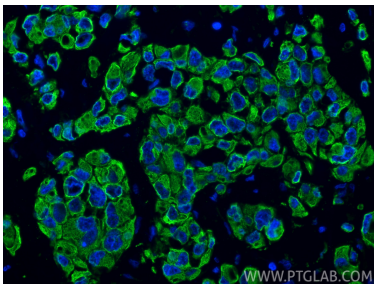
Various lysates were subjected to SDS PAGE followed by western blot with 86457-4-RR (Cytokeratin 8 antibody) at dilution of 1:10000 incubated at room temperature for 1.5 hours. This data was developed using the same antibody clone with 86457-4-PBS in a different storage buffer formulation.



The mean Cytokeratin 8 concentration was determined to be 116.99 ng/mL in MCF-7 cell extract based on a 1.20 mg/mL extract load, 15.41 ng/mL in HepG2 cell extract based on a 1.20 mg/mL extract load and 2.54 ng/mL in SH-SY5Y cell extract based on a 1.20 mg/mL extract load.



Sandwich ELISA standard curve of MP02886-1, Human Cytokeratin 8 Recombinant Matched Antibody Pair - PBS only. 86457-4-PBS was coated to a plate as the capture antibody and incubated with serial dilutions of standard SY02545. 86457-8-PBS was HRP conjugated as the detection antibody. Range: 0.313-20 ng/mL



Immunofluorescent analysis of (4% PFA) fixed paraffin-embedded human breast cancer tissue using Cytokeratin 8 antibody (86457-4-RR, Clone: 251045E11) at dilution of 1:400 and CoraLite®488-Conjugated Goat Anti-Rabbit IgG(H+L) (SA00013-2). Heat mediated antigen retrieval with Tris-EDTA buffer (pH 9.0). This data was developed using the same antibody clone with 86457-4-PBS in a different storage buffer formulation.