

For Research Use Only

Cytokeratin 8 Recombinant monoclonal antibody, PBS Only (Detector)

Catalog Number: 86457-8-PBS



Basic Information

Catalog Number: 86457-8-PBS	GenBank Accession Number: BC000654	Purification Method: Protein A purification
Size: 100ug , Concentration: 1 mg/ml by Nanodrop;	GeneID (NCBI): 3856	CloneNo.: 251045B1
Source: Rabbit	UNIPROT ID: P05787	
Isotype: IgG	Full Name: keratin 8	
	Calculated MW: 54 kDa	

Applications

Tested Applications:
Sandwich ELISA, Indirect ELISA

Species Specificity:
human

Product Information

86457-8-PBS targets Cytokeratin 8 as part of a matched antibody pair:

MP02886-1: 86457-4-PBS capture and 86457-8-PBS detection (validated in Sandwich ELISA)

Unconjugated rabbit recombinant monoclonal antibody in PBS only (BSA and azide free) storage buffer at a concentration of 1 mg/mL, ready for conjugation. Created using Proteintech's proprietary in-house recombinant technology. Recombinant production enables unrivalled batch-to-batch consistency, easy scale-up, and future security of supply.

This conjugation ready format makes antibodies ideal for use in many applications including: ELISAs, multiplex assays requiring matched pairs, mass cytometry, and multiplex imaging applications. Antibody use should be optimized by the end user for each application and assay.

Storage

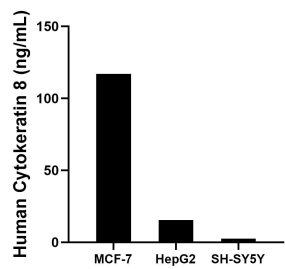
Storage:
Store at -80°C.

Storage Buffer:
PBS only, pH7.3

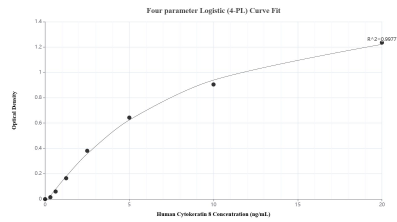
For technical support and original validation data for this product please contact:
T: 1 (888) 4PTGLAB (1-888-478-4522) (toll free in USA), or 1(312) 455-8498 (outside USA)
E: proteintech@ptglab.com
W: ptglab.com

This product is exclusively available under Proteintech Group brand and is not available to purchase from any other manufacturer.

Selected Validation Data



The mean Cytokeratin 8 concentration was determined to be 116.99 ng/mL in MCF-7 cell extract based on a 1.20 mg/mL extract load, 15.41 ng/mL in HepG2 cell extract based on a 1.20 mg/mL extract load and 2.54 ng/mL in SH-SY5Y cell extract based on a 1.20 mg/mL extract load.



Sandwich ELISA standard curve of MP02886-1, Human Cytokeratin 8 Recombinant Matched Antibody Pair - PBS only. 86457-4-PBS was coated to a plate as the capture antibody and incubated with serial dilutions of standard SY02545. 86457-8-PBS was HRP conjugated as the detection antibody. Range: 0.313-20 ng/mL.