

For Research Use Only

ODF2 Recombinant antibody

Catalog Number: 86459-2-RR



Basic Information

Catalog Number: 86459-2-RR	GenBank Accession Number: BC010629	Purification Method: Protein A purification
Size: 100ul , Concentration: 1000 µg/ml by Nanodrop;	GeneID (NCBI): 4957	CloneNo.: 251271E12
Source: Rabbit	UNIPROT ID: Q5BJF6	Recommended Dilutions: WB: 1:5000-1:50000
Isotype: IgG	Full Name: outer dense fiber of sperm tails 2	
Immunogen Catalog Number: AG2693	Calculated MW: 763 aa, 89 kDa	
	Observed MW: 80-100 kDa	

Applications

Tested Applications: WB, ELISA	Positive Controls: WB : OVCAR-3 cells, Jurkat cells, MCF-7 cells, NIH/3T3 cells, mouse lung tissue
Species Specificity: human, mouse	

Background Information

ODF2 (outer dense fiber 2) is the major cenexin protein of the cytoskeleton of the sperm tail. In somatic cells, it is a component of the centrosome in which it is located in the appendages of the mother centriole. The gene for the cenexin protein, which was first identified as a protein marker of the mother centriole, was subsequently found to be identical to ODF2 and encodes transcripts cenexin 1 and cenexin 2. ODF2 is ubiquitously expressed in many cell types as various splicing variants. Additionally, ODF2 localizes to centrioles, basal bodies, and primary cilia, which are all structurally and functionally interconnected. ODF2 has 10 isoforms with MW 67-100 kDa.

Storage

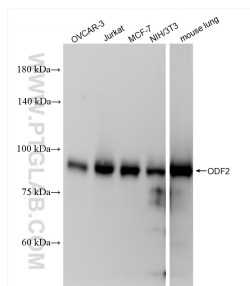
Storage:
Store at -20°C. Stable for one year after shipment.
Storage Buffer:
PBS with 0.02% sodium azide and 50% glycerol, pH7.3
Aliquoting is unnecessary for -20°C storage

*** 20ul sizes contain 0.1% BSA

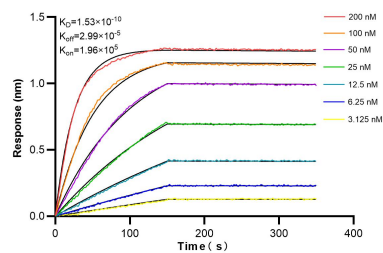
For technical support and original validation data for this product please contact:
T: 1 (888) 4PTGLAB (1-888-478-4522) (toll free in USA), or 1(312) 455-8498 (outside USA)
E: proteintech@ptglab.com
W: ptglab.com

This product is exclusively available under Proteintech Group brand and is not available to purchase from any other manufacturer.

Selected Validation Data



Various lysates were subjected to SDS PAGE followed by western blot with 86459-2-RR (ODF2 antibody) at dilution of 1:10000 incubated at room temperature for 1.5 hours.



Biolayer interferometry (BLI) kinetic assays of 86459-2-RR against Human ODF2 were performed. The affinity constant is 0.153 nM.