

For Research Use Only

ATAD3A/B Recombinant antibody

Catalog Number: 86461-2-RR



Basic Information

Catalog Number: 86461-2-RR	GenBank Accession Number: BC002542	Purification Method: Protein A purification
Size: 100ul , Concentration: 1000 µg/ml by Nanodrop;	GeneID (NCBI): 83858	CloneNo.: 251342C9
Source: Rabbit	UNIPROT ID: Q5T9A4	Recommended Dilutions: WB: 1:5000-1:50000 IF/ICC: 1:500-1:2000
Isotype: IgG	Full Name: ATPase family, AAA domain containing 3B	
Immunogen Catalog Number: AG9836	Calculated MW: 72 kDa	
	Observed MW: 65-70 kDa	

Applications

Tested Applications: WB, IF/ICC, ELISA	Positive Controls:
Species Specificity: human, mouse, rat	WB : A549 cells, U-251 cells, mouse kidney tissue, rat kidney tissue, mouse brain tissue IF/ICC : HEPG2 cells,

Background Information

ATAD3 (ATPase family AAA Domain-containing protein 3) is a mitochondrial membrane bound ATPase whose function has not yet been discovered but its role is essential for embryonic development. The analysis of the cellular properties of ATAD3A and ATAD3B in different human cancer cell lines shows on the contrary that they can present anti-proliferative and chemoresistant properties.

Storage

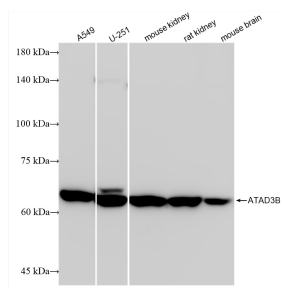
Storage:
Store at -20°C. Stable for one year after shipment.
Storage Buffer:
PBS with 0.02% sodium azide and 50% glycerol, pH7.3
Aliquoting is unnecessary for -20°C storage

*** 20ul sizes contain 0.1% BSA

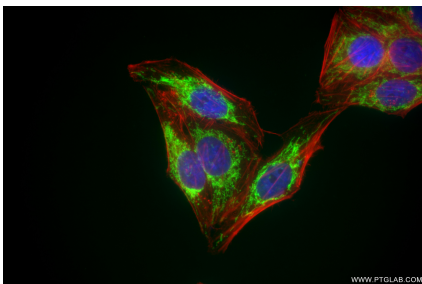
For technical support and original validation data for this product please contact:
T: 1 (888) 4PTGLAB (1-888-478-4522) (toll free in USA), or 1(312) 455-8498 (outside USA)
E: proteintech@ptglab.com
W: ptglab.com

This product is exclusively available under Proteintech Group brand and is not available to purchase from any other manufacturer.

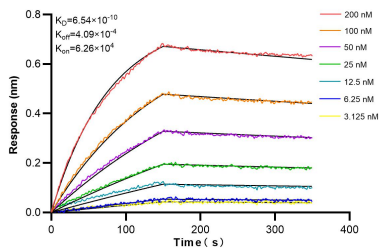
Selected Validation Data



Various lysates were subjected to SDS PAGE followed by western blot with 86461-2-RR (ATAD3B antibody) at dilution of 1:10000 incubated at room temperature for 1.5 hours.



Immunofluorescent analysis of (4% PFA) fixed HEPG2 cells using ATAD3A/B antibody (86461-2-RR, Clone: 251342C9) at dilution of 1:1000 and CoraLite® 488-Conjugated Goat Anti-Rabbit IgG(H+L) (SA00013-2), CL594-Phalloidin (red).



Biolayer interferometry (BLI) kinetic assays of 86461-2-RR against Human ATAD3A/B were performed. The affinity constant is 0.654 nM.