

For Research Use Only

# C5 Recombinant monoclonal antibody, PBS Only (Capture)

Catalog Number:86463-3-PBS



## Basic Information

<b>Catalog Number:</b> 86463-3-PBS	<b>GenBank Accession Number:</b> NM_001735.3	<b>Purification Method:</b> Protein A purification
<b>Size:</b> 100ug , Concentration: 1 mg/ml by Nanodrop;	<b>GeneID (NCBI):</b> 727	<b>CloneNo.:</b> 251190F8
<b>Source:</b> Rabbit	<b>UNIPROT ID:</b> P01031	
<b>Isotype:</b> IgG	<b>Full Name:</b> complement component 5	
<b>Immunogen Catalog Number:</b> EG4205	<b>Calculated MW:</b> 188 kDa	

## Applications

**Tested Applications:**  
Sandwich ELISA, Indirect ELISA

**Species Specificity:**  
human

## Product Information

86463-3-PBS targets C5 as part of a matched antibody pair:

MP02611-1: 86463-3-PBS capture and 86463-2-PBS detection (validated in Sandwich ELISA)

Unconjugated rabbit recombinant monoclonal antibody in PBS only (BSA and azide free) storage buffer at a concentration of 1 mg/mL, ready for conjugation. Created using Proteintech's proprietary in-house recombinant technology. Recombinant production enables unrivalled batch-to-batch consistency, easy scale-up, and future security of supply.

This conjugation ready format makes antibodies ideal for use in many applications including: ELISAs, multiplex assays requiring matched pairs, mass cytometry, and multiplex imaging applications. Antibody use should be optimized by the end user for each application and assay.

## Background Information

The complement system is an important effector that bridges the innate and adaptive immune systems. The fifth component of complement, C5, is part of the complement cascade and plays an important role in inflammation and cell killing. It consists of disulfide-linked alpha and beta polypeptide chains but can be cleaved into two active peptides (C5a and C5b) by C5 convertases. Mutations and defects in C5 are associated with severe recurrent infections. This antibody specifically recognizes the C5 alpha chain.(PMID: 20010915; PMID: 8011297; PMID: 6554279)

## Storage

**Storage:**  
Store at -80°C.

**Storage Buffer:**  
PBS only, pH7.3

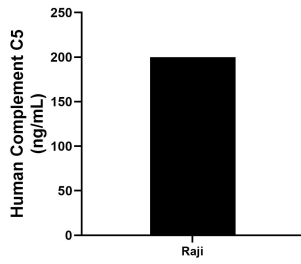
For technical support and original validation data for this product please contact:

T: 1 (888) 4PTGLAB (1-888-478-4522) (toll free  
in USA), or 1(312) 455-8498 (outside USA)

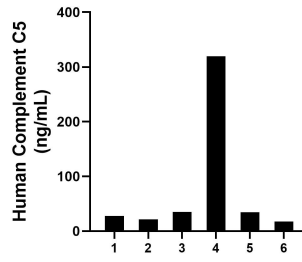
E: [proteintech@ptglab.com](mailto:proteintech@ptglab.com)  
W: [ptglab.com](http://ptglab.com)

**This product is exclusively available under Proteintech Group brand and is not available to purchase from any other manufacturer.**

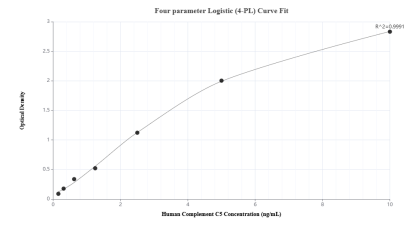
## Selected Validation Data



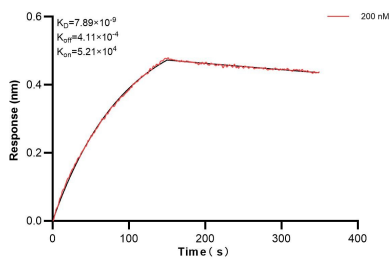
The mean Complement C5 concentration was determined to be 200.14 ng/mL in C6 cell extract based on a 1.3 mg/mL extract load.



Serum of plasma individual healthy human donors was measured. The human Complement C5 concentration of detected samples was determined to be 75.89 ng/mL with a range of 17.23 - 319.31 ng/mL.



Sandwich ELISA standard curve of MP02611-1, Human Complement C5 Recombinant Matched Antibody Pair - PBS only. 86463-3-PBS was coated to a plate as the capture antibody and incubated with serial dilutions of standard Eg4205. 86463-2-PBS was HRP conjugated as the detection antibody. Range: 0.156-10 ng/mL



Biolayer interferometry (BLI) kinetic assay of 86463-3-PBS against Human C5 was performed. The affinity constant is 7.89 nM.