

For Research Use Only

CHMP6 Recombinant monoclonal antibody, PBS Only

Catalog Number: 86474-3-PBS



Basic Information

Catalog Number: 86474-3-PBS	GenBank Accession Number: BC010108	Purification Method: Protein A purification
Size: 100ug , Concentration: 1 mg/ml by Nanodrop;	GeneID (NCBI): 79643	CloneNo.: 251259C5
Source: Rabbit	UNIPROT ID: Q96FZ7	
Isotype: IgG	Full Name: chromatin modifying protein 6	
Immunogen Catalog Number: AG9357	Calculated MW: 201 aa, 23 kDa	
	Observed MW: 28-30 kDa	

Applications

Tested Applications:
WB, IF/ICC, Indirect ELISA

Species Specificity:
human, mouse, rat

Background Information

CHMP6 (charged multivesicular body protein 6) is a protein that plays a significant role in the formation of multivesicular bodies (MVBs) within cells. It is a component of the endosomal sorting complex required for transport III (ESCRT-III), which is involved in the sorting and transport of proteins within the cell. CHMP6 has been identified as a novel prognostic biomarker in bladder cancer, where it enhances cell survival and migration by regulating the cell cycle. (PMID: 40630215)

Storage

Storage:
Store at -80°C.

Storage Buffer:
PBS only, pH7.3

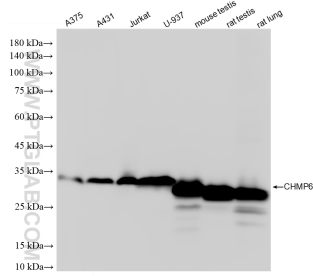
For technical support and original validation data for this product please contact:

T: 1 (888) 4PTGLAB (1-888-478-4522) (toll free in USA), or 1(312) 455-8498 (outside USA)

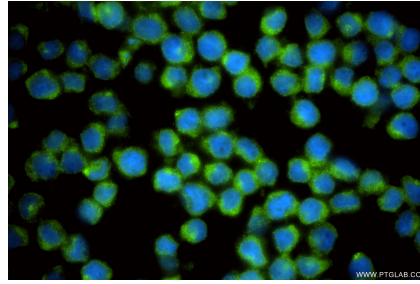
E: proteintech@ptglab.com
W: ptglab.com

This product is exclusively available under Proteintech Group brand and is not available to purchase from any other manufacturer.

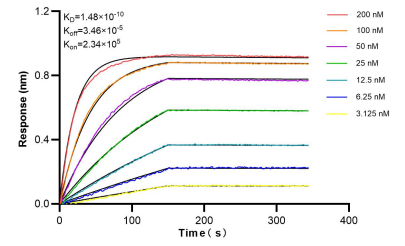
Selected Validation Data



Various lysates were subjected to SDS PAGE followed by western blot with 86474-3-RR (CHMP6 antibody) at dilution of 1:10000 incubated at room temperature for 1.5 hours. This data was developed using the same antibody clone with 86474-3-PBS in a different storage buffer formulation.



Immunofluorescent analysis of (4% PFA) fixed U-937 cells using CHMP6 antibody (86474-3-RR, Clone: 251259C5) at dilution of 1:200 and CoraLite® 488-Conjugated Goat Anti-Rabbit IgG(H+L) (SA00013-2). This data was developed using the same antibody clone with 86474-3-PBS in a different storage buffer formulation.



Bi-layer interferometry (BLI) kinetic assays of 86474-3-RR against Human CHMP6 were performed. The affinity constant is 0.148 nM.