

For Research Use Only

# CHMP6 Recombinant monoclonal antibody

Catalog Number: 86474-3-RR



## Basic Information

<b>Catalog Number:</b> 86474-3-RR	<b>GenBank Accession Number:</b> BC010108	<b>Purification Method:</b> Protein A purification
<b>Size:</b> 100ul , Concentration: 1000 µg/ml by Nanodrop;	<b>GeneID (NCBI):</b> 79643	<b>CloneNo.:</b> 251259C5
<b>Source:</b> Rabbit	<b>UNIPROT ID:</b> Q96FZ7	<b>Recommended Dilutions:</b> WB: 1:5000-1:50000 IF/ICC: 1:50-1:500
<b>Isotype:</b> IgG	<b>Full Name:</b> chromatin modifying protein 6	
<b>Immunogen Catalog Number:</b> AG9357	<b>Calculated MW:</b> 201 aa, 23 kDa	
	<b>Observed MW:</b> 28-30 kDa	

## Applications

<b>Tested Applications:</b> WB, IF/ICC, ELISA	<b>Positive Controls:</b> WB : A375 cells, A431 cells, Jurkat cells, U-937 cells, mouse testis tissue, rat testis tissue, rat lung tissue
<b>Species Specificity:</b> human, mouse, rat	<b>IF/ICC :</b> U-937 cells,

## Background Information

CHMP6 (charged multivesicular body protein 6) is a protein that plays a significant role in the formation of multivesicular bodies (MVBs) within cells. It is a component of the endosomal sorting complex required for transport III (ESCRT-III), which is involved in the sorting and transport of proteins within the cell. CHMP6 has been identified as a novel prognostic biomarker in bladder cancer, where it enhances cell survival and migration by regulating the cell cycle. (PMID: 40630215)

## Storage

**Storage:**  
Store at -20°C. Stable for one year after shipment.  
**Storage Buffer:**  
PBS with 0.02% sodium azide and 50% glycerol, pH7.3  
*Aliquoting is unnecessary for -20°C storage*

\*\*\* 20ul sizes contain 0.1% BSA

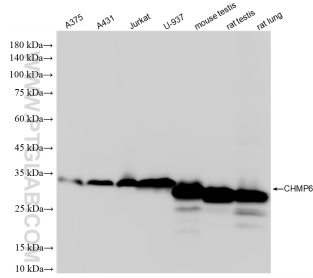
For technical support and original validation data for this product please contact:

T: 1 (888) 4PTGLAB (1-888-478-4522) (toll free in USA), or 1(312) 455-8498 (outside USA)

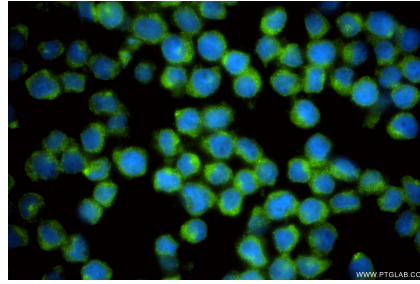
E: [proteintech@ptglab.com](mailto:proteintech@ptglab.com)  
W: [ptglab.com](http://ptglab.com)

**This product is exclusively available under Proteintech Group brand and is not available to purchase from any other manufacturer.**

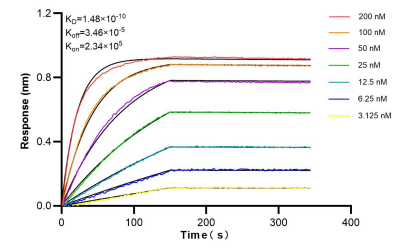
## Selected Validation Data



Various lysates were subjected to SDS PAGE followed by western blot with 86474-3-RR (CHMP6 antibody) at dilution of 1:10000 incubated at room temperature for 1.5 hours.



Immunofluorescent analysis of (4% PFA) fixed U-937 cells using CHMP6 antibody (86474-3-RR, Clone: 251259C5) at dilution of 1:200 and CoraLite® 488-Conjugated Goat Anti-Rabbit IgG(H+L) (SA00013-2).



Bi-layer interferometry (BLI) kinetic assays of 86474-3-RR against Human CHIMP6 were performed. The affinity constant is 0.148 nM.