

For Research Use Only

CMPK1 Recombinant monoclonal antibody, PBS Only (Capture)

Catalog Number: 86475-2-PBS



Basic Information

Catalog Number: 86475-2-PBS	GenBank Accession Number: BC014961	Purification Method: Protein A purification
Size: 100ug , Concentration: 1 mg/ml by Nanodrop;	GeneID (NCBI): 51727	CloneNo.: 251233H8
Source: Rabbit	UNIPROT ID: P30085	
Isotype: IgG	Full Name: cytidine monophosphate (UMP-CMP) kinase 1, cytosolic	
Immunogen Catalog Number: AG1920	Calculated MW: 228 aa, 26 kDa	

Applications

Tested Applications:
Cytometric bead array, Sandwich ELISA, Indirect ELISA

Species Specificity:
human

Product Information

86475-2-PBS targets CMPK1 as part of a matched antibody pair.

MP02460-1: 86475-2-PBS capture and 86475-1-PBS detection (validated in Cytometric bead array, Sandwich ELISA)

Unconjugated rabbit recombinant monoclonal antibody in PBS only (BSA and azide free) storage buffer at a concentration of 1 mg/mL, ready for conjugation. Created using Proteintech's proprietary in-house recombinant technology. Recombinant production enables unrivalled batch-to-batch consistency, easy scale-up, and future security of supply.

This conjugation ready format makes antibodies ideal for use in many applications including: ELISAs, multiplex assays requiring matched pairs, mass cytometry, and multiplex imaging applications. Antibody use should be optimized by the end user for each application and assay.

Storage

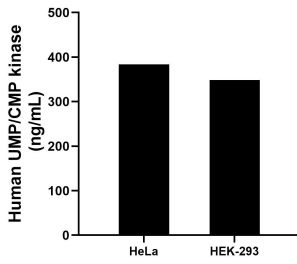
Storage:
Store at -80°C.

Storage Buffer:
PBS only, pH7.3

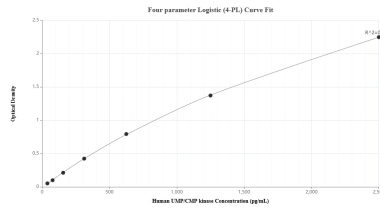
For technical support and original validation data for this product please contact:
T: 1 (888) 4PTGLAB (1-888-478-4522) (toll free in USA), or 1(312) 455-8498 (outside USA) E: proteintech@ptglab.com
W: ptglab.com

This product is exclusively available under Proteintech Group brand and is not available to purchase from any other manufacturer.

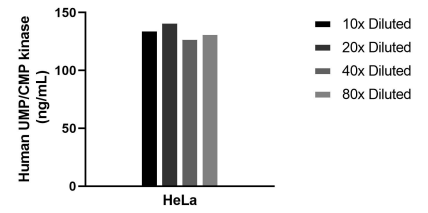
Selected Validation Data



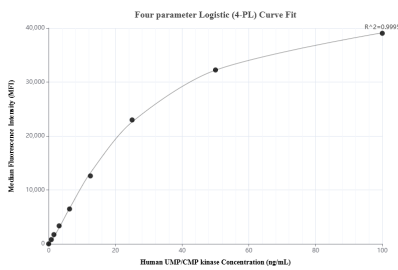
The mean UMP/CMP kinase concentration was determined to be 383.79 ng/mL in HeLa cell extract based on a 1.2 mg/mL extract load and 348.74 ng/mL in HEK-293 cell extract based on a 1.2 mg/mL extract load.



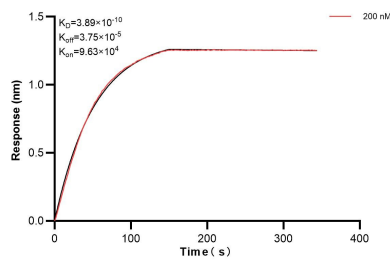
Sandwich ELISA standard curve of MP02460-1, Human UMP/CMP kinase Recombinant Matched Antibody Pair - PBS only. 86475-2-PBS was coated to a plate as the capture antibody and incubated with serial dilutions of standard Ag1920. 86475-1-PBS was HRP conjugated as the detection antibody. Range: 39.1-2500 pg/mL



The mean UMP/CMP kinase concentration was determined to be 134.2 ng/mL in HeLa cell extract based on a 1.2 mg/mL extract load.



Cytometric bead array standard curve of MP02460-1, UMP/CMP kinase Recombinant Matched Antibody Pair, PBS Only. Capture antibody: 86475-2-PBS. Detection antibody: 86475-1-PBS. Standard: Ag1920. Range: 0.781-100 ng/mL



Biolayer interferometry (BLI) kinetic assay of 86475-2-PBS against Human CMPK1 was performed. The affinity constant is 0.389 nM.