

For Research Use Only

# NAS1/SLC13A1 Recombinant antibody

Catalog Number: 86476-1-RR



## Basic Information

Catalog Number:

86476-1-RR

Size:

100ul, Concentration: 1000 µg/ml by Nanodrop;

Source:

Rabbit

Isotype:

IgG

Immunogen Catalog Number:

AG19026

GenBank Accession Number:

BC148686

GeneID (NCBI):

6561

UNIPROT ID:

Q9BZW2

Full Name:

solute carrier family 13  
(sodium/sulfate symporters), member  
1

Calculated MW:

595 aa, 66 kDa

Observed MW:

66 kDa

Purification Method:

Protein A purification

CloneNo.:

251252F11

Recommended Dilutions:

WB: 1:5000-1:50000

## Applications

Tested Applications:

WB, ELISA

Species Specificity:

human, mouse, rat

Positive Controls:

WB : mouse kidney tissue, rat kidney tissue, human kidney tissue

## Background Information

SLC13A1 also known as NAS1, is an apical membrane Na<sup>+</sup>-sulfate cotransporter involved in sulfate homeostasis in the kidney. SLC13A1 primarily participates in pH-independent, sodium-dependent cotransport of sulfate across renal proximal tubules and small intestinal epithelia(PMID: 38552027).

## Storage

Storage:

Store at -20°C. Stable for one year after shipment.

Storage Buffer:

PBS with 0.02% sodium azide and 50% glycerol, pH7.3

Aliquoting is unnecessary for -20°C storage

\*\*\* 20ul sizes contain 0.1% BSA

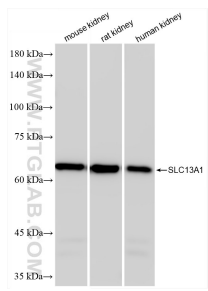
For technical support and original validation data for this product please contact:

T: 1 (888) 4PTGLAB (1-888-478-4522) (toll free in USA), or 1(312) 455-8498 (outside USA)

E: [proteintech@ptglab.com](mailto:proteintech@ptglab.com)  
W: [ptglab.com](http://ptglab.com)

This product is exclusively available under Proteintech Group brand and is not available to purchase from any other manufacturer.

## Selected Validation Data



Various lysates were subjected to SDS PAGE followed by western blot with 86476-1-RR (NAS1/SLC13A1 antibody) at dilution of 1:10000 incubated at room temperature for 1.5 hours.