

For Research Use Only

CCL14 Recombinant antibody, PBS Only (Detector)

Catalog Number: 86478-1-PBS



Basic Information

Catalog Number: 86478-1-PBS	GenBank Accession Number: NM_032963.3	Purification Method: Protein A purification
Size: 100ug, Concentration: 1 mg/ml by Nanodrop;	GeneID (NCBI): 6358	CloneNo.: 250487D5
Source: Rabbit	UNIPROT ID: Q16627-1	
Isotype: IgG	Full Name: chemokine (C-C motif) ligand 14	
Immunogen Catalog Number: EG2879	Calculated MW: 11k kDa	

Applications

Tested Applications:
Cytometric bead array, Indirect ELISA, Sample test

Species Specificity:
human

Product Information

86478-1-PBS targets CCL14 as part of a matched antibody pair.

MP02465-1: 86478-2-PBS capture and 86478-1-PBS detection (validated in Cytometric bead array, Sandwich ELISA)

Unconjugated rabbit recombinant monoclonal antibody in PBS only (BSA and azide free) storage buffer at a concentration of 1 mg/mL, ready for conjugation. Created using Proteintech's proprietary in-house recombinant technology. Recombinant production enables unrivalled batch-to-batch consistency, easy scale-up, and future security of supply.

This conjugation ready format makes antibodies ideal for use in many applications including: ELISAs, multiplex assays requiring matched pairs, mass cytometry, and multiplex imaging applications. Antibody use should be optimized by the end user for each application and assay.

Storage

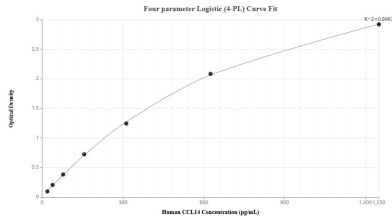
Storage:
Store at -80°C.

Storage Buffer:
PBS only, pH7.3

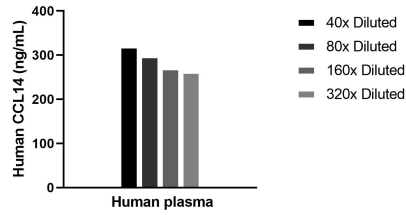
For technical support and original validation data for this product please contact:
T: 1 (888) 4PTGLAB (1-888-478-4522) (toll free in USA), or 1(312) 455-8498 (outside USA) E: proteintech@ptglab.com
W: ptglab.com

This product is exclusively available under Proteintech Group brand and is not available to purchase from any other manufacturer.

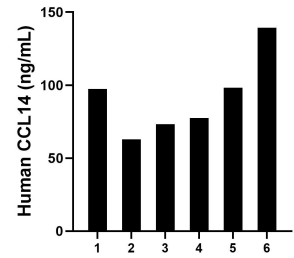
Selected Validation Data



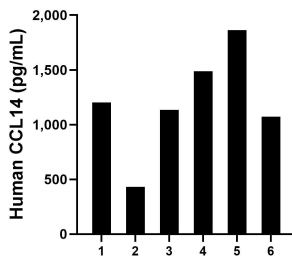
Sandwich ELISA standard curve of MP02465-1, Human CCL14 Recombinant Matched Antibody Pair - PBS only. 86478-2-PBS was coated to a plate as the capture antibody and incubated with serial dilutions of standard Eg2879. 86478-1-PBS was HRP conjugated as the detection antibody. Range: 19.5-1250 pg/mL



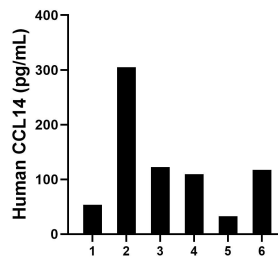
The mean CCL14 concentration was determined to be 286.7 ng/mL in human plasma.



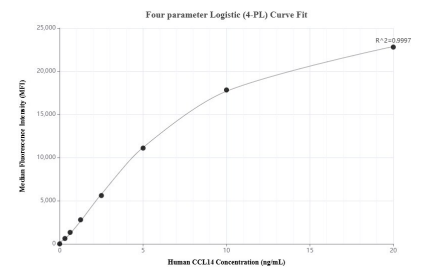
Plasma of six individual healthy human donors was measured. The human CCL14 concentration of detected samples was determined to be 91.45 ng/mL with a range of 62.87-139.32 ng/mL.



Saliva of six individual healthy human donors was measured. The human CCL14 concentration of detected samples was determined to be 1,198.7 pg/mL with a range of 431.7-1,862.1 pg/mL



Urine of six individual healthy human donors was measured. The human CCL14 concentration of detected samples was determined to be 123.44 pg/mL with a range of 32.9-304.6 pg/mL



Cytometric bead array standard curve of MP02465-1, CCL14 Recombinant Matched Antibody Pair, PBS Only. Capture antibody: 86478-2-PBS. Detection antibody: 86478-1-PBS. Standard: Eg2879. Range: 0.312-20 ng/mL