

For Research Use Only

CREBBP Recombinant monoclonal antibody, PBS Only (Capture)

Catalog Number: 86481-4-PBS



Basic Information

Catalog Number: 86481-4-PBS	GenBank Accession Number: NM_001079846	Purification Method: Protein A purification
Size: 100ug, Concentration: 1 mg/ml by Nanodrop;	GeneID (NCBI): 1387	CloneNo.: 253020C4
Source: Rabbit	UNIPROT ID: Q92793	
Isotype: IgG	Full Name: CREB binding protein	
Immunogen Catalog Number: AG27489	Calculated MW: 265 aa	

Applications

Tested Applications:
Cytometric bead array, Sandwich ELISA, Indirect ELISA

Species Specificity:
human

Product Information

86481-4-PBS targets CREBBP as part of a matched antibody pair:

MP03100-1: 86481-4-PBS capture and 86481-3-PBS detection (validated in Cytometric bead array)

MP03100-2: 86481-4-PBS capture and 86481-2-PBS detection (validated in Sandwich ELISA)

Unconjugated rabbit recombinant monoclonal antibody in PBS only (BSA and azide free) storage buffer at a concentration of 1 mg/mL, ready for conjugation. Created using Proteintech's proprietary in-house recombinant technology. Recombinant production enables unrivalled batch-to-batch consistency, easy scale-up, and future security of supply.

This conjugation ready format makes antibodies ideal for use in many applications including: ELISAs, multiplex assays requiring matched pairs, mass cytometry, and multiplex imaging applications. Antibody use should be optimized by the end user for each application and assay.

Storage

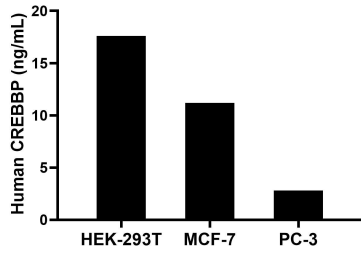
Storage:
Store at -80°C.

Storage Buffer:
PBS only, pH7.3

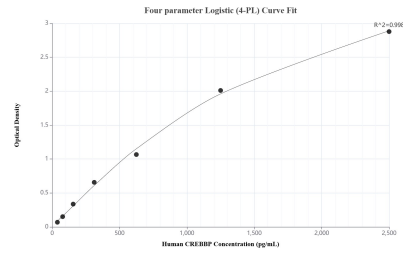
For technical support and original validation data for this product please contact:
T: 1 (888) 4PTGLAB (1-888-478-4522) (toll free in USA), or 1(312) 455-8498 (outside USA) E: proteintech@ptglab.com
W: ptglab.com

This product is exclusively available under Proteintech Group brand and is not available to purchase from any other manufacturer.

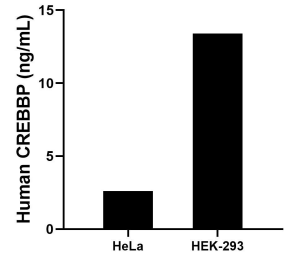
Selected Validation Data



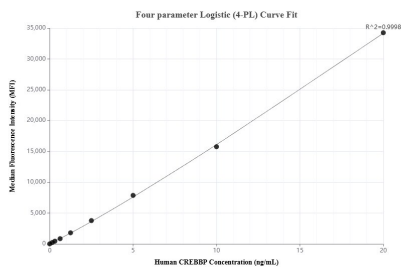
The mean CREBBP concentration was determined to be 17.6 ng/mL in HEK-293T cell extract based on a 1.2 mg/mL extract load, 11.2 ng/mL in MCF-7 cell extract based on a 1.2 mg/mL extract load and 2.8 ng/mL in PC-3 cell extract based on a 1.3 mg/mL extract load.



Sandwich ELISA standard curve of MP03100-2, Human CREBBP Recombinant Matched Antibody Pair - PBS only. 86481-4-PBS was coated to a plate as the capture antibody and incubated with serial dilutions of standard Ag27489. 86481-2-PBS was HRP conjugated as the detection antibody. Range: 39.1-2500 pg/mL



The mean CREBBP concentration was determined to be 2.6 ng/mL in HeLa cell extract based on a 1.2 mg/mL extract load, 13.4 ng/mL in HEK-293 cell extract based on a 3.2 mg/mL extract load.



Cytometric bead array standard curve of MP03100-1, CREBBP Recombinant Matched Antibody Pair, PBS Only. Capture antibody: 86481-4-PBS. Detection antibody: 86481-3-PBS. Standard: Ag27489. Range: 0.156-20 ng/mL