

For Research Use Only

Mouse Ccl17 Recombinant monoclonal antibody, PBS Only (Capture)

Catalog Number:86482-3-PBS



Basic Information

Catalog Number: 86482-3-PBS	GenBank Accession Number: NM_011332.3	Purification Method: Protein A purification
Size: 100ug , Concentration: 1 mg/ml by Nanodrop;	GeneID (NCBI): 20295	CloneNo.: 250385F4
Source: Rabbit	UNIPROT ID: F6R5P4	
Isotype: IgG	Full Name: chemokine (C-C motif) ligand 17	
Immunogen Catalog Number: EG3319	Calculated MW: 11 kDa	

Applications

Tested Applications:
Sandwich ELISA, Indirect ELISA

Species Specificity:
mouse

Product Information

86482-3-PBS targets Ccl17 as part of a matched antibody pair:

MP02817-1: 86482-3-PBS capture and 86482-2-PBS detection (validated in Sandwich ELISA)

Unconjugated rabbit recombinant monoclonal antibody in PBS only (BSA and azide free) storage buffer at a concentration of 1 mg/mL, ready for conjugation. Created using Proteintech's proprietary in-house recombinant technology. Recombinant production enables unrivalled batch-to-batch consistency, easy scale-up, and future security of supply.

This conjugation ready format makes antibodies ideal for use in many applications including: ELISAs, multiplex assays requiring matched pairs, mass cytometry, and multiplex imaging applications. Antibody use should be optimized by the end user for each application and assay.

Storage

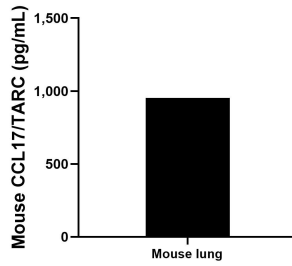
Storage:
Store at -80°C.

Storage Buffer:
PBS only, pH7.3

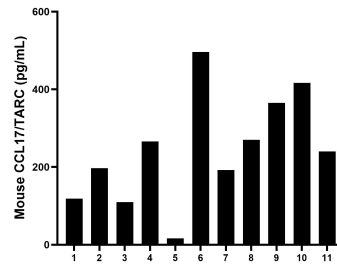
For technical support and original validation data for this product please contact:
T: 1 (888) 4PTGLAB (1-888-478-4522) (toll free in USA), or 1(312) 455-8498 (outside USA) E: proteintech@ptglab.com
W: ptglab.com

This product is exclusively available under Proteintech Group brand and is not available to purchase from any other manufacturer.

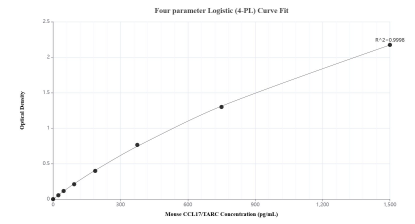
Selected Validation Data



Mouse lung, cut into 1-2 mm pieces, was cultured in RPMI 1640 supplemented with 10% fetal bovine serum, 2 mM L-glutamine, 100 U/mL penicillin, and 100 µg/mL streptomycin sulfate. An aliquot of the cell culture supernatant was removed, assayed for CCL17/TARC, and measured 952.8 pg/mL.



Serum of eleven mice was measured. The CCL17/TARC concentration of detected samples was determined to be 244.4 pg/mL with a range of 16.2-496.4 pg/mL.



Sandwich ELISA standard curve of MP02817-1, Mouse CCL17/TARC Recombinant Matched Antibody Pair - PBS only. 86482-3-PBS was coated to a plate as the capture antibody and incubated with serial dilutions of standard Eg3319. 86482-2-PBS was HRP conjugated as the detection antibody. Range: 23.4-1500 pg/mL.