

For Research Use Only

Rat B7-H4 Recombinant monoclonal antibody, PBS Only (Detector)

Catalog Number: 86484-2-PBS



Basic Information

Catalog Number: 86484-2-PBS	GenBank Accession Number: NM_001024244.1	Purification Method: Protein A purification
Size: 100ug , Concentration: 1 mg/ml by Nanodrop;	GeneID (NCBI): 295322	CloneNo.: 250392D4
Source: Rabbit	UNIPROT ID: Q501W4	
Isotype: IgG	Full Name: V-set domain containing T cell activation inhibitor 1	
Immunogen Catalog Number: EG3230	Calculated MW: 31 kDa	

Applications

Tested Applications:
Sandwich ELISA, Indirect ELISA

Species Specificity:
rat

Product Information

86484-2-PBS targets B7-H4 as part of a matched antibody pair:

MP02632-1: 86484-1-PBS capture and 86484-2-PBS detection (validated in Sandwich ELISA)

Unconjugated rabbit recombinant monoclonal antibody in PBS only (BSA and azide free) storage buffer at a concentration of 1 mg/mL, ready for conjugation. Created using Proteintech's proprietary in-house recombinant technology. Recombinant production enables unrivalled batch-to-batch consistency, easy scale-up, and future security of supply.

This conjugation ready format makes antibodies ideal for use in many applications including: ELISAs, multiplex assays requiring matched pairs, mass cytometry, and multiplex imaging applications. Antibody use should be optimized by the end user for each application and assay.

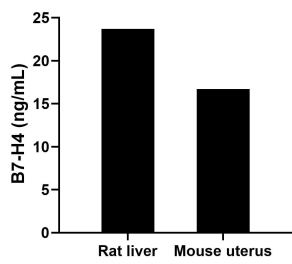
Storage

Storage:
Store at -80°C.
Storage Buffer:
PBS only, pH7.3

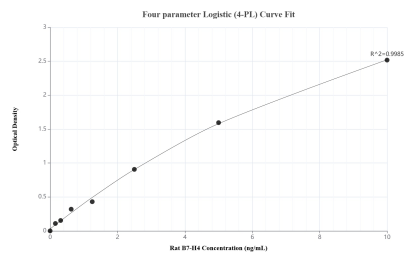
For technical support and original validation data for this product please contact:
T: 1 (888) 4PTGLAB (1-888-478-4522) (toll free in USA), or 1(312) 455-8498 (outside USA)
E: proteintech@ptglab.com
W: ptglab.com

This product is exclusively available under Proteintech Group brand and is not available to purchase from any other manufacturer.

Selected Validation Data



The mean B7-H4 concentration was determined to be 23.71 ng/mL in rat liver extract based on a 8.20 mg/mL extract load and 16.72 ng/mL in mouse uterus extract based on a 3.40 mg/mL extract load.



Sandwich ELISA standard curve of MP02632-1, Rat B7-H4 Recombinant Matched Antibody Pair - PBS only. 86484-1-PBS was coated to a plate as the capture antibody and incubated with serial dilutions of standard Eg3230. 86484-2-PBS was HRP conjugated as the detection antibody. Range: 0.156-10 ng/mL.