

# PKLR Recombinant antibody

Catalog Number: 86485-1-RR

## Basic Information

<b>Catalog Number:</b> 86485-1-RR	<b>GenBank Accession Number:</b> BC025737	<b>Purification Method:</b> Protein A purification
<b>Size:</b> 100ul , Concentration: 1000 µg/ml by Nanodrop;	<b>GeneID (NCBI):</b> 5313	<b>CloneNo.:</b> 251231F12
<b>Source:</b> Rabbit	<b>UNIPROT ID:</b> P30613	<b>Recommended Dilutions:</b> WB: 1:2000-1:10000
<b>Isotype:</b> IgG	<b>Full Name:</b> pyruvate kinase, liver and RBC	
<b>Immunogen Catalog Number:</b> AG17933	<b>Calculated MW:</b> 574 aa, 62 kDa	
	<b>Observed MW:</b> 58-62 kDa	

## Applications

<b>Tested Applications:</b> WB, ELISA	<b>Positive Controls:</b> WB : HepG2 cells, MCF-7 cells
<b>Species Specificity:</b> human	

## Background Information

PKLR(Pyruvate kinase isozymes R/L) is also named as PK1,PKL,which is a glycolytic enzyme that catalyzes the transphosphorylation from phosphoenolpyruvate (PEP) to ADP, yielding pyruvate and ATP. It is the last step of the glycolytic pathway and is essentially irreversible.It belongs to the pyruvate kinase family and There are 4 isozymes of pyruvate kinase in mammals: L, R, M1 and M2. L type is major isozyme in the liver, R is found in red cells, M1 is the main form in muscle, heart and brain, and M2 is found in early fetal tissues.Defects in PKLR are the cause of pyruvate kinase hyperactivity (PKHYP) and pyruvate kinase deficiency of red cells (PKRD).It can form a homotetramer(PMID:11960989).

## Storage

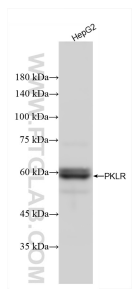
**Storage:**  
Store at -20°C. Stable for one year after shipment.  
**Storage Buffer:**  
PBS with 0.02% sodium azide and 50% glycerol, pH7.3  
Aliquoting is unnecessary for -20°C storage

\*\*\* 20ul sizes contain 0.1% BSA

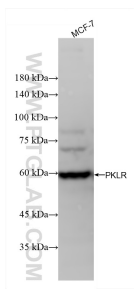
For technical support and original validation data for this product please contact:  
T: 1 (888) 4PTGLAB (1-888-478-4522) (toll free in USA), or 1(312) 455-8498 (outside USA)  
E: [proteintech@ptglab.com](mailto:proteintech@ptglab.com)  
W: [ptglab.com](http://ptglab.com)

This product is exclusively available under Proteintech Group brand and is not available to purchase from any other manufacturer.

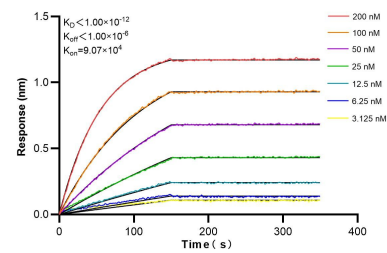
## Selected Validation Data



HepG2 cells were subjected to SDS PAGE followed by western blot with 86485-1-RR (PKLR antibody) at dilution of 1:5000 incubated at room temperature for 1.5 hours.



MCF-7 cells were subjected to SDS PAGE followed by western blot with 86485-1-RR (PKLR antibody) at dilution of 1:5000 incubated at room temperature for 1.5 hours.



Biolayer interferometry (BLI) kinetic assays of 86485-1-RR against Human PKLR were performed. The affinity constant is below 1 pM.