

For Research Use Only

# OTUD5 Recombinant monoclonal antibody

Catalog Number:86490-1-RR



## Basic Information

<b>Catalog Number:</b> 86490-1-RR	<b>GenBank Accession Number:</b> BC028225	<b>Purification Method:</b> Protein A purification
<b>Size:</b> 100ul , Concentration: 1000 µg/ml by Nanodrop;	<b>GeneID (NCBI):</b> 55593	<b>CloneNo.:</b> 251221B9
<b>Source:</b> Rabbit	<b>UNIPROT ID:</b> Q96G74	<b>Recommended Dilutions:</b> WB: 1:5000-1:50000
<b>Isotype:</b> IgG	<b>Full Name:</b> OTU domain containing 5	
<b>Immunogen Catalog Number:</b> AG15190	<b>Calculated MW:</b> 571 aa, 61 kDa	
	<b>Observed MW:</b> 70-75 kDa	

## Applications

<b>Tested Applications:</b> WB, ELISA	<b>Positive Controls:</b> WB : Jurkat cells, K-562 cells, NIH/3T3 cells
<b>Species Specificity:</b> human, mouse	

## Background Information

The deubiquitinating enzyme OTUD5, also known as deubiquitinating enzyme A (DUBA), is a member of the deubiquitinating enzyme OTU family. By deubiquitinating other proteins, OTUD5 is an important regulator of several physiological processes, such as immune signaling and DNA damage responses. The dysregulation of these processes can increase the risk of associated diseases, including inflammation, cancer and genetic disorders.

## Storage

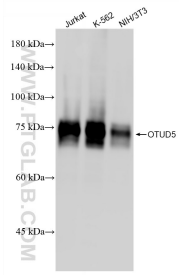
**Storage:**  
Store at -20°C. Stable for one year after shipment.  
**Storage Buffer:**  
PBS with 0.02% sodium azide and 50% glycerol, pH7.3  
Aliquoting is unnecessary for -20°C storage

\*\*\* 20ul sizes contain 0.1% BSA

For technical support and original validation data for this product please contact:  
T: 1 (888) 4PTGLAB (1-888-478-4522) (toll free in USA), or 1(312) 455-8498 (outside USA)      E: proteintech@ptglab.com  
W: ptglab.com

This product is exclusively available under Proteintech Group brand and is not available to purchase from any other manufacturer.

## Selected Validation Data



Various lysates were subjected to SDS PAGE followed by western blot with 86490-1-RR (OTUD5 antibody) at dilution of 1:20000 incubated at room temperature for 1.5 hours.